

## Stock Replacement Lower Control Arm for 2007+ Toyota Tundra Part # 87555-R

### Before you start disassembly

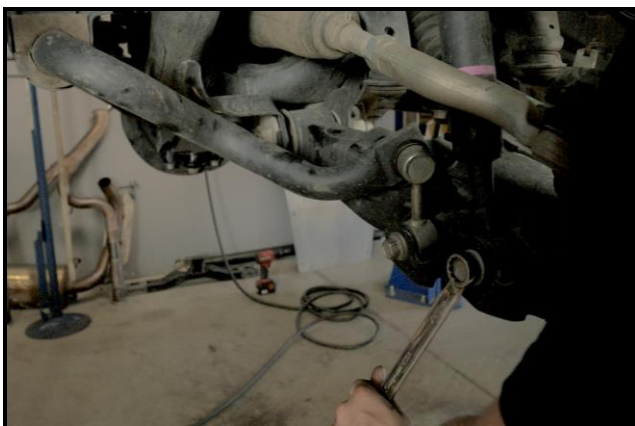
- Make sure the vehicle is secure on jack stands and ready to work on.
- The vehicle suspension should be at max extension.

### Tools:

- 18mm Wrench
- 19mm Wrench
- 21mm Wrench
- 22mm Wrench
- 24mm Wrench
- 12mm Allen Wrench
- 5/8" Allen Wrench
- 1 1/8" Wrench
- 3/8" Wrench
- Dead Blow Hammer
- Ball Peen Hammer
- Crescent Wrench

### Disassembly:

- 1.Remove the front wheels
- 2.Remove the lower shock bolts using a 22mm wrench or socket.



- 3.** Remove the bolt that connects the sway bar link to the stock lower control arm as well as the nut that secures the link to the sway bar using a 19mm wrench or socket.



- 4.** Loosen (do not remove) the two cam bolts that connect the lower control arm to the vehicle using a 24mm wrench or socket.



5. Remove the two bolts that hold the ball joint cradle to the steering knuckle using a 22mm wrench or socket.

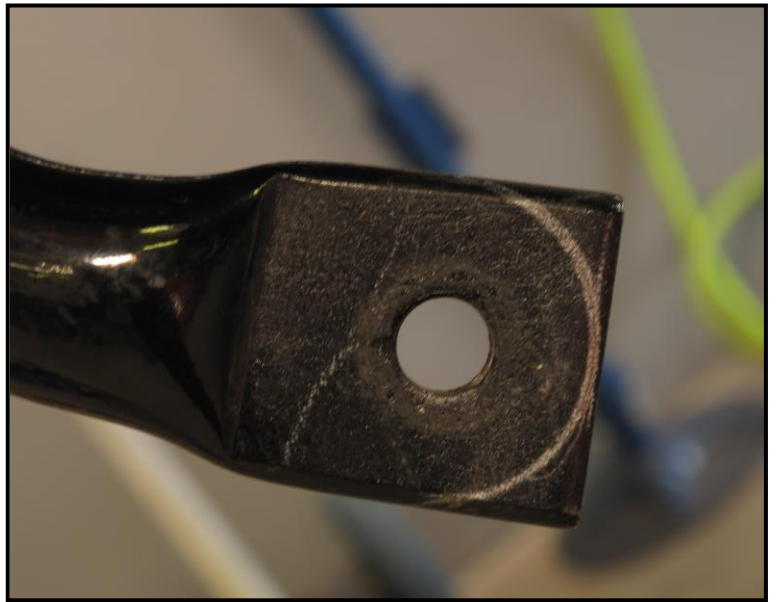


6. Let the lower control arm pivot down into a vertical position, then remove the two bolts that hold the control arm to the frame, and remove the stock lower control arm from the vehicle.

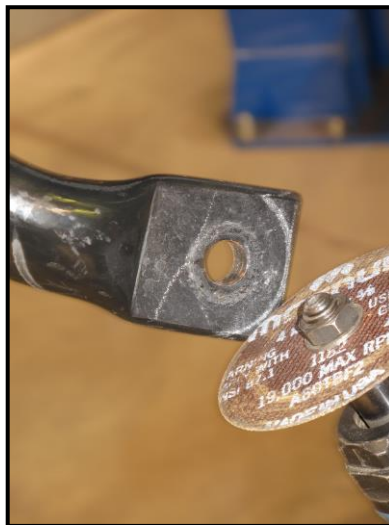


7. After removing the lower control arm, remove the cotter pin and ball joint nut using a 24mm wrench or socket, then use a hammer to shock the stock ball joint cradle and separate it from the ball joint. If this does not work, you can use a pickle fork to remove the cradle.

**8.**With the stock sway bar installed on the vehicle but not connected to the lower control arm, mark the sway bar ends using a piece of tubing or a large diameter socket.



**9.**Once marked, use a disk cutter to cut off the corners, then use a sander to round the end of the sway bar.



**10.**Install the supplied bushings, inner sleeves, and zerk fittings into the new lower control arm, then install the new arm on the vehicle (it may take the use of a dead blow hammer to get the arm into the frame pockets).



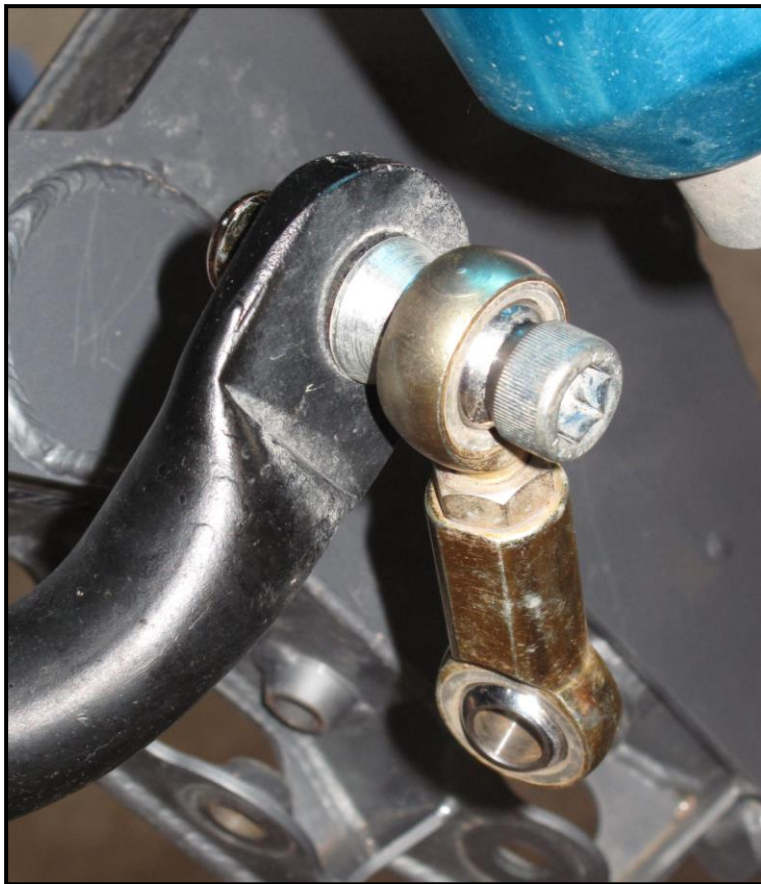
**11.**Install the alignment cam bolts that connect the lower control arms to the frame.



**12.**Install the short misalignment in the top of the uniball, the large misalignment into the bottom of the uniball (tapered side down), slide the ball joint cradle onto the tapered misalignment, then slide the bolt from the top through all of the pieces then install the washer and tighten the nut using a 5/8" Allen wrench and 1 1/8" wrench or socket (110ft/lbs).



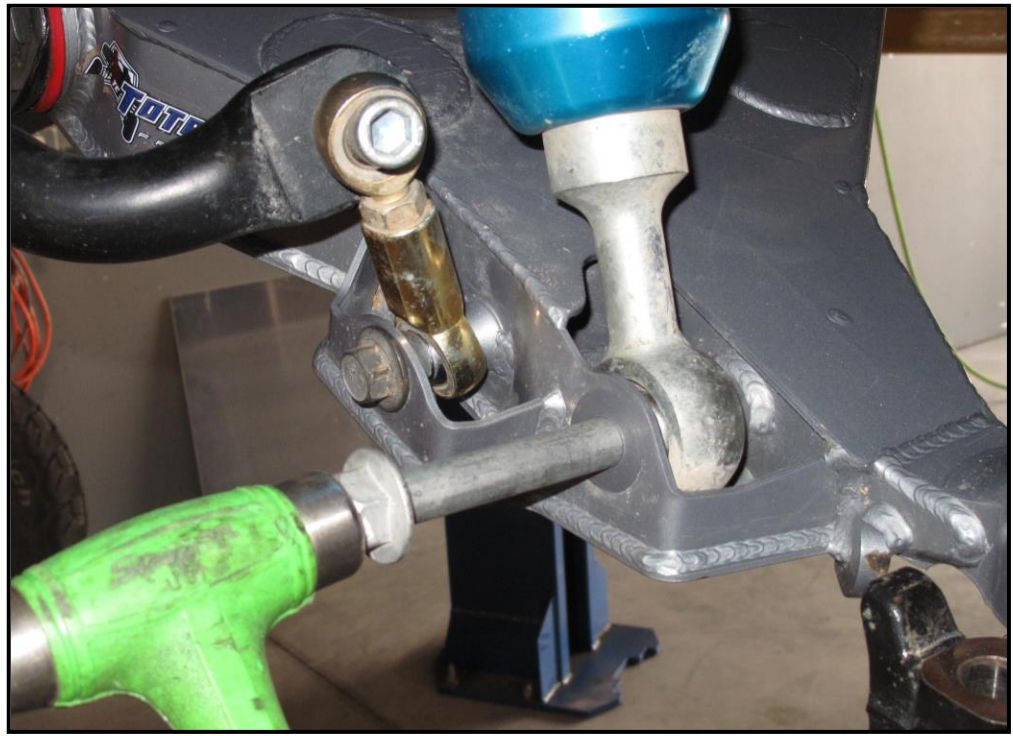
- 13.** Install the pre-set sway bar heim links onto the modified sway bar using the chamfered bolt, heim spacer, and 14mm flange nut.



- 14.** Next swing the control arm into the horizontal position and install the other end of the heim into the lower control arm using the flange head bolt and a 21mm wrench to hold the nut inside the arm.



- 15.** Move the control arm up slightly and install and tighten the shock bolt.



- 16.** Lower the spindle onto the ball-joint cradle and install the stock bolts.



- 17.** Once all steps have been completed, go back through every bolt that was loosened and make sure that it has been re tightened and/or torqued to proper spec.

**Items List:**

<b>Part Number</b>	<b>Description</b>	<b>Quantity</b>
87552L	Lower Arm 2007-2015 Tundra Stock Length (RACE) Left	1
87552R	Lower Arm 2007-2015 Tundra Stock Length (RACE) Right	1
10342	Bolt 3/4"-16x4.25" Custom Misalignment	2
10034C	1"-3/4" Hi Misalignment Spacer Custom	2
10034TUN	07 Tundra Lower Tapered Adapter	2
12304	Washer 3/4" SAE	2
11302	Nut 3/4"-16 C-Lock	2
10005	Zerk Fitting 1/4"-28 90 Degree	4
60893	07+ Tundra Bushing (Long)	2
60892	07+ Tundra Bushing (Short)	6
69705	Inner Sleeve 07 Tundra Lower Short	2
69704	Inner Sleeve 07 Tundra Lower Long	2
FK-WSSX16T-1	1" Stainless Uniball	2
30604	Snap Ring 1" Uniball	2
10146	14MM-2.0 x 60MM Bolt With Chamfer	2
30016	2007+ Tundra Sway Bar Heim Spacer	2
JM14MT	RHT 14MM Heim	2
JF 14MT	RHT 14MM Female Heim	2
SJNR14M	14MM RHT Jam	2
10147	14MM-2.0 x 70MM Flange Head	2
11141	14MM-2.0 Flange Nylock	4