



**FRONT RUNNER**

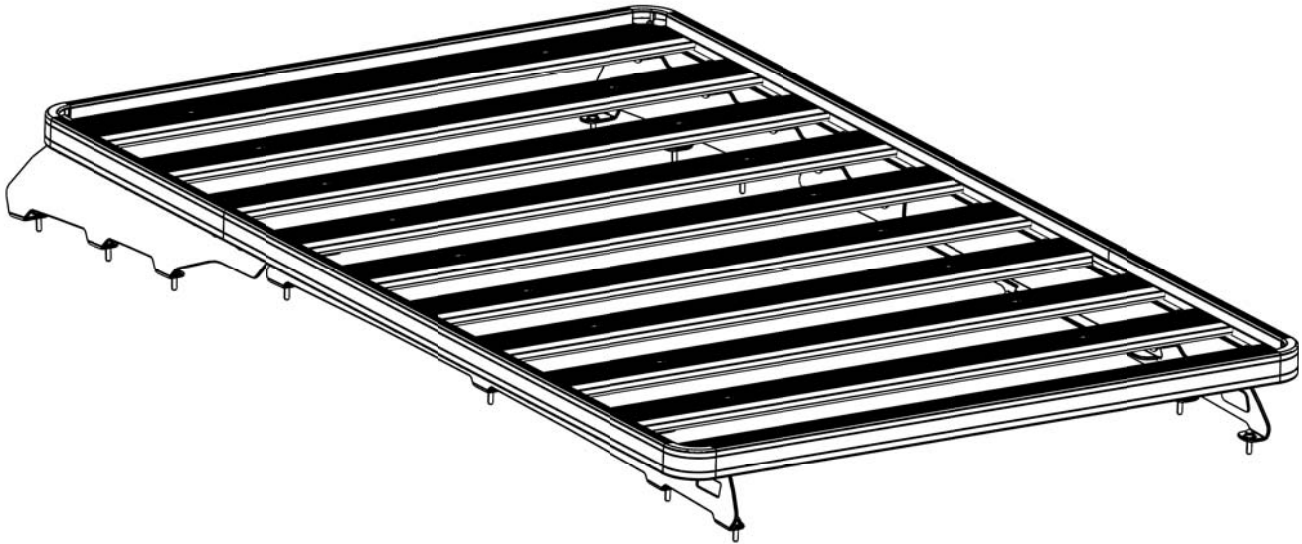
**NISSAN EXTERRA  
SLIMLINE II RACK  
(1165MM X 1964MM)**

**ENG**

FANX002 / KRNX005T



**INSTALL TIME: 60 mins**



**READ ME FIRST:**

Thank you for purchasing a Front Runner Slimline II Rack.

This Roof Rack consists of a kit that contains:

- 1.) A Slimline II Tray
- 2.) A mounting system specific to your vehicle

This document will help you fit the Slimline II Tray to your specific vehicle.

**IMPORTANT WARNING!**

**IT IS CRITICAL THAT ALL FRONT RUNNER PRODUCTS BE PROPERLY AND SECURELY ASSEMBLED AND ATTACHED TO YOUR VEHICLE. IMPROPER ATTACHMENT COULD RESULT IN AN AUTOMOBILE ACCIDENT, AND COULD CAUSE SERIOUS BODILY INJURY OR DEATH TO YOU OR TO OTHERS. YOU ARE RESPONSIBLE FOR ASSEMBLING AND SECURING ALL FRONT RUNNER PRODUCTS TO YOUR VEHICLE, CHECKING THE ATTACHMENTS PRIOR TO USE, AND PERIODICALLY INSPECTING THE PRODUCTS FOR ADJUSTMENT, WEAR, AND DAMAGE. THEREFORE, YOU MUST READ AND UNDERSTAND ALL OF THE INSTRUCTIONS AND CAUTIONS SUPPLIED WITH YOUR FRONT RUNNER PRODUCT PRIOR TO INSTALLATION OR USE. IF YOU DO NOT UNDERSTAND ALL OF THE INSTRUCTIONS AND CAUTIONS, OR IF YOU HAVE NO MECHANICAL EXPERIENCE AND ARE NOT THOROUGHLY FAMILIAR WITH THE INSTALLATION PROCEDURES, YOU SHOULD HAVE THE PRODUCT INSTALLED BY A PROFESSIONAL INSTALLER OR OTHER QUALIFIED PERSONNEL.**

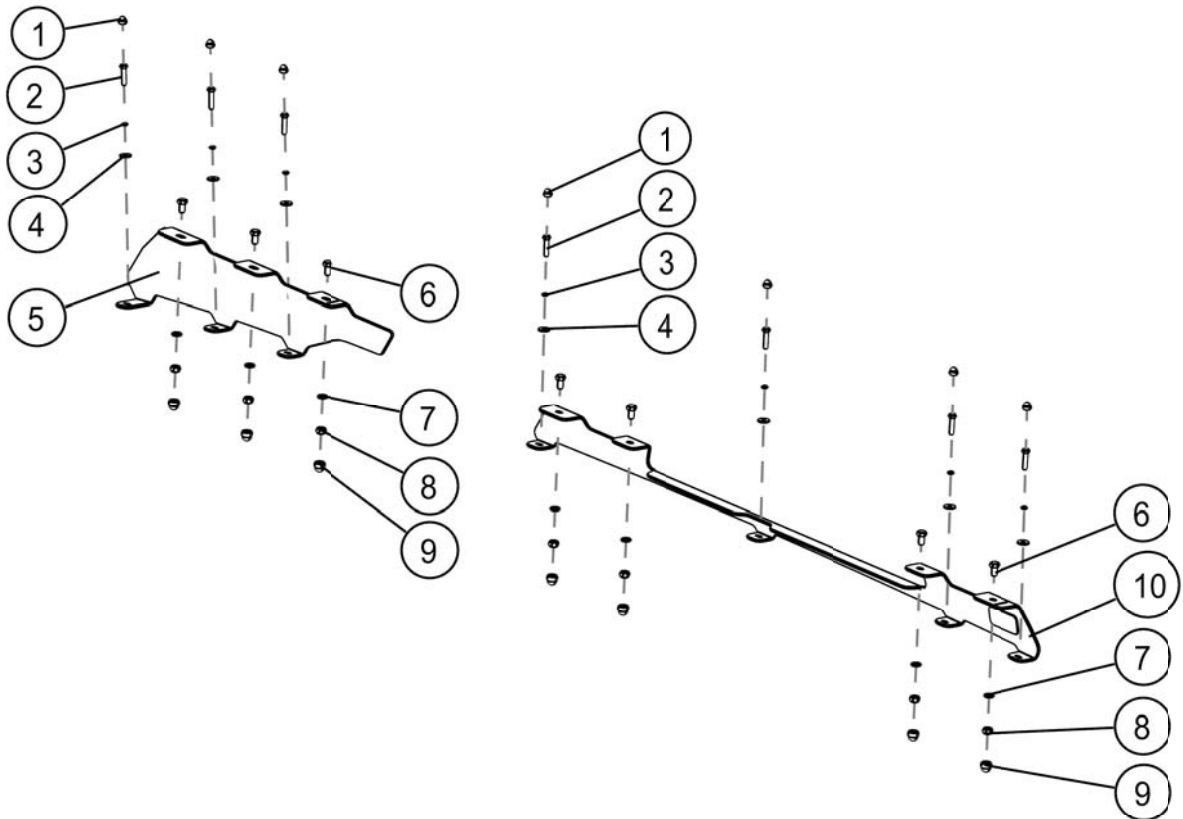
# 1 GET ORGANIZED...

Here is what you are looking at for FANX002: Please note that only the right hand side's components have been shown.

Item #	Quantity	Description
1	14	M6 NUT CAP
2	14	M6 x 30 HEX BOLT
3	14	M6 SPRING WASHER
4	14	M6 x 19 FLAT WASHER
5	2	FRONT FOOT RAIL - 1 LEFT, 1 RIGHT
6	14	M8 x 20 HEX BOLT
7	14	M8 FLAT WASHER
8	14	M8 NYLOC NUT
9	14	M8 NUT CAP
10	2	REAR FOOT RAIL - 1 LEFT, 1 RIGHT
11	14	M6 x 20 BUTTON HEAD BOLT (NOT PICTURED, REFER TO STEP 2C)

### You will need:

- 13 mm Flat or Socket Wrench
- 10 mm Flat or Socket Wrench
- 4 mm Hex Key
- Measuring Tape
- Tube of Silicone
- a Friend

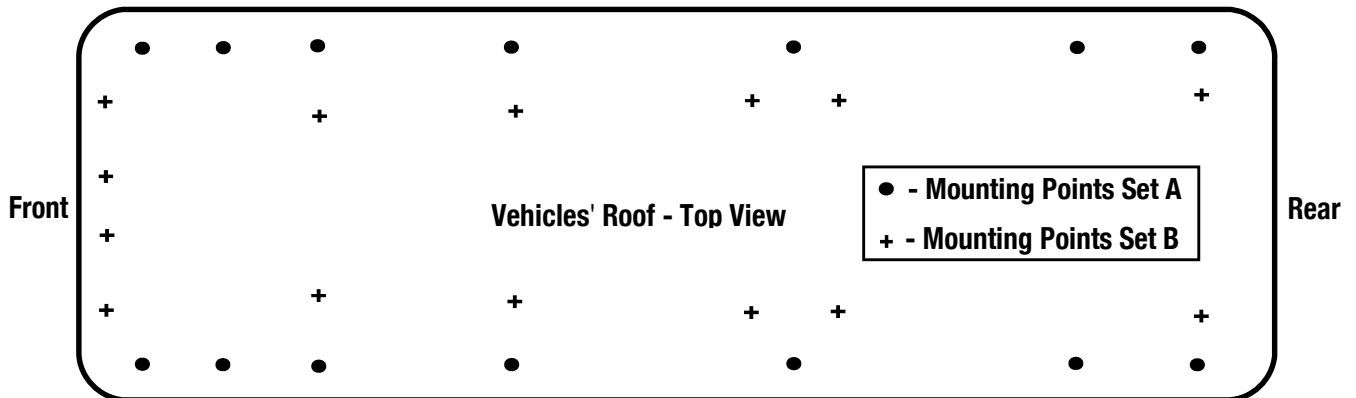


**(A)** Familiarize yourself with the parts and then step away from the work area and read through these instructions from beginning to end. Take a moment as a little prep now may save you a lot of time later.

## 2 FIT THE FOOT RAILS

( A ) Using the Torx Driver received in your vehicles' tool kit, loosen and remove the vehicles' roof rack/rails.

( B ) Using the fourteen M6 x 20 Button Head Bolts (Item 11) supplied, place a small amount of silicone on the thread of each bolt and secure them to the mounting points in Set B, thereby sealing the mounting points.



( C ) Place the left and right hand side Front Foot Rails (Item 5) onto the vehicles' roof, lining up the mounting points in the Foot Rails with the first three mounting points in the front of the vehicles' roof.



( D ) Loosely secure the Front Foot Rails to the vehicles' roof using six M6 x 30 Hex Bolts, six M6 x 19 Flat Washers and six M6 Spring Washers (Items 2, 3, 4).

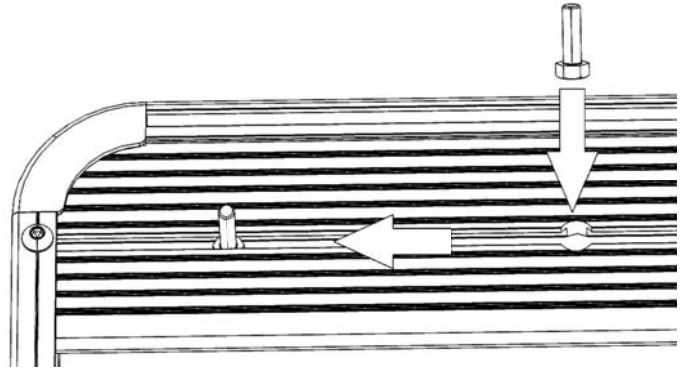
( E ) Place the Rear Foot Rails (Item 10) onto the vehicles' roof lining them up with the remaining mounting points. Loosely secure the rear Foot Rails to the vehicles' roof using remaining M6 x 30 Hex Bolts, six M6 x 19 Flat Washers and six M6 Spring Washers (Items 2, 3, 4).

### 3 FIT THE RACK



**Note:** If your Slimline II Tray is not already assembled, assemble it as per the Slimline II Tray Universal Assembly Instruction (Document RRSUNI). Read Step 3A before fitting the Wind Deflector

- ( A ) Before fitting the Wind Deflector, and with the Rack in the upside down position, (Check with product sticker. It should be upside down), slide a M8 x 20 Hex Bolt (Item 6) into each end of the First Slat using the machined slot as shown.



- ( B ) With your rack still upside down from Step 3A, slide a M8 x 20 Hex Bolt (Item 6) into each end of Slats 2, 3, 4, 5, 9 & 10 (Slat 1 is the Slat with the Wind Deflector attached to it).

Grab your Friend and with one of you on each side of the Rack, flip the Rack end over end (Prevents the Hex Bolts from falling out the machined slots) so that the M8 x 20 Hex Bolts are facing down. Approach the vehicle from the rear, with the Wind Deflector facing forward. Lift the Rack up and over the Roof positioning it above the Foot Rails. Bring the Rack down slowly, lining up the Bolts in the Rack with the holes in the top of the Foot Rails. Hand tighten the Rack to the Foot Rails using the M8 Washers and M8 Nyloc Nuts (Items 7 & 8) supplied.

Tighten all the M6 x 30 Hex Bolts from Steps 2D & 2E. Cover the M6 x 30 Hex Bolts with the M6 Nut Caps (Items 1) supplied.

Center the rack - left to right (check using a tape measure). Fasten all the Nuts securing the Rack to the Foot Rails. Cover the M8 Nyloc Nuts with the M8 Nut Caps (Item 9) supplied.

**Congratulations, you have completed your installation. Take a step back and admire your work. Good Job!**



## **4 TAKE A TRIP**

- ( A )** After your first adventure, check that all nuts, bolts, screws and fittings are tight. Re-tighten where needed. You'll find a small amount of settling has happened.

Go on many more adventures, periodically checking all nuts, bolts, screws and fittings.



Front Runner can not recommend a maximum load carrying capacity. Please refer to your vehicle manufacturer's recommendations.

## **5 INSTALL OTHER VEHICLE AND RACK ACCESSORIES**

- ( A )** Now's the time to visit your favorite Front Runner dealer in person or online.