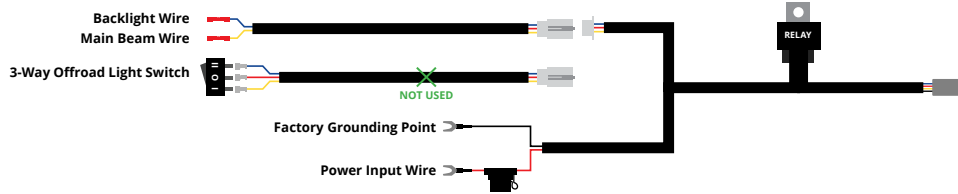


Wiring Instructions

The following instructions are for JL Wranglers and JT Gladiators with an Auxiliary Switch Bank. If you do not have the Auxiliary Switch Bank, use the included toggle switch adapter wire to route a switch. All power sources must be fused.



18. Route the included harness to the light(s) through the engine bay.

19. Locate and connect to one of the four power wires for the Auxiliary Switch Bank near the battery. Using wire strippers, remove enough insulation to make a good connection. Insert the yellow wire into the butt connector and crimp it to secure the connection.

Orange 10A	Blue 10A	Brown 40A	Green 40A
------------	----------	-----------	-----------

20. Repeat this process for the blue backlight wire. If you already have a Stage Series backlit LED installed, you may choose to tap it into the same switch.

21. Connect positive and negative battery wires to the battery, or to main power terminals near the fuse box.

Please contact **Diode Dynamics** should you have any questions about the installation or wiring process, at **314-205-3033** (10a-5p CST) or **contact@diodedynamics.com**.

NEED MORE HELP?

Scan the QR code to link to our YouTube Channel!

We continuously bring in vehicles to our testing garage in order to create step-by-step videos to walk you through the installation process on your specific vehicle. Scan the QR code to see all our installation videos. Be sure to subscribe to our channel to stay up-to-date on the newest products and videos from Diode Dynamics!



This installation guide is for the following SKUs:

- Jeep JL Wrangler/JT Gladiator S55 CrossLink Bumper LED Pod Kit, White Combo (DD7278 Sport, DD7279 Pro)
- Jeep JL Wrangler/JT Gladiator S55 CrossLink Bumper LED Pod Kit, White Driving (DD7280 Sport, DD7281 Pro)
- Jeep JL Wrangler/JT Gladiator S55 CrossLink Bumper LED Pod Kit, Yellow Combo (DD7288 Sport, DD7289 Pro)
- Jeep JL Wrangler/JT Gladiator S55 CrossLink Bumper LED Pod Kit, Yellow Driving (DD7290 Sport, DD7291 Pro)
- Jeep JL Wrangler/JT Gladiator S55 CrossLink Grille Lightbar Kit, White Combo (DD6826 Sport, DD7268 Pro)
- Jeep JL Wrangler/JT Gladiator S55 CrossLink Grille Lightbar Kit, Yellow Combo (DD6827 Sport, DD7269 Pro)



Jeep JL Wrangler/JT Gladiator SS5 CrossLink Bumper/Grille Kit



Thank you for your purchase of our new SS5 CrossLink Bumper/Grille Kit. CAD-designed to use existing mounting points, this kit is compatible with the 2018+ Jeep JL Wrangler and 2019+ Jeep JT Gladiator. Installation instructions are included below.



Please contact us if you have any questions.

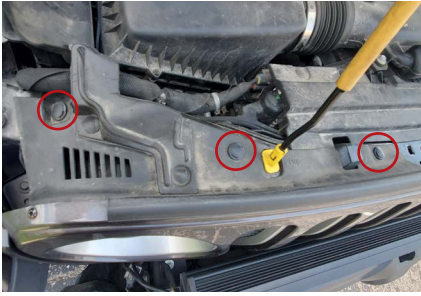
Tools Needed: Trim removal tool, 3/8" ratchet, 5/8" socket, 10mm socket, drill, 10mm drill bit, 10mm wrench, 5mm Allen key, 4mm Allen key



1. Using a plastic trim removal tool, remove the two plastic rivets on the bumper bar and six forward-facing plastic rivets from the bumper cover.

Remove the plastic bumper cover and set it aside. It will not be reused.

See inside for further instructions.

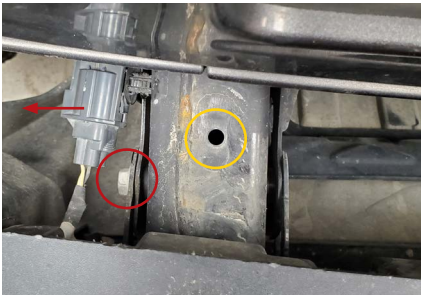


2. Open the hood. Using a trim removal tool, remove the six push-rivets across the top of the grille.

3. Gently lift the top of the grille up and away from the vehicle, over any obstructions.



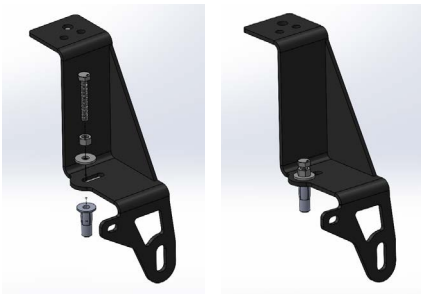
4. From each side, grab the grille through the lower-inside edge of the headlight opening and the bottom of the grille. Pull straight out to release the grille.



5. Drill the existing hole on top of the frame rail to 10mm (or 25/64") on each side. Circled in yellow in the picture to the left.

6. Remove the connector holder from the frame rail on the passenger side. Allow it to hang free as it will be reinstalled.

7. Using a 5/8" socket, remove the outboard bumper bolt from the frame rail. It will be reused. Circled in red in the picture to the left.



Driver-side bracket

RIVNUT INSTALLATION: If you have a rivnut installation tool, follow the tool's instructions to install the included M6 rivnuts in the drilled holes, then skip to step 13. Otherwise continue to step 8.

8. Assemble the 40mm M6 screw, nut, washer, and rivnut onto the base bracket as shown in the diagrams to the left. Ensure that there is full thread engagement on the rivnut, and that the nut and rivnut are snug to the bracket.



Passenger-side bracket

9. Place the bracket on the frame rail such that the rivnut is in the drilled hole. Reuse the 5/8" bolt from step 5 to secure the bracket onto the frame rail as shown in the picture to the left.

10. Facing down, towards the bracket, use a 10mm wrench to turn the M6 nut clockwise (traveling down the screw) while holding the screw in place with a 10mm socket or wrench. This will pull the rivnut up to the bracket, securing it to the frame rail.

11. When you can no longer turn the nut, remove the screw from the rivnut, unbolt the bracket, and remove the bracket. Loosely thread the screw back into the rivnut and pull outward to confirm it is securely installed into the frame rail. If the rivnut pulls out, repeat steps 7 through 10 to reinstall.

12. Repeat steps 7 through 10 to install the rivnut on the other side of the vehicle.

13. Then reverse steps 2 through 4 to reinstall the grille.



14. Secure the brackets back onto the frame rail as shown in the picture to the left. Reuse the OEM 5/8" bolt, and a 10mm socket with the included 20mm M6 screws and oversized washers. The passenger side bracket has an additional tab to secure the connector holder removed in step 6.

15. If installing two pods, use the included universal mount brackets and hardware to install directly onto the base brackets.

If installing the 4-pod CrossLink lightbar, use a 5mm Allen key, 10mm wrench, and the provided 16mm M6 screws, washers, and flange nuts to install the SS5 CrossLink universal brackets onto the base brackets.

16. Assemble your lightbar using the included CrossLink lightbar instructions.

17. Mount the assembled SS5 lightbar onto the brackets securing it loosely with the provided M6 hardware.

See back for further instructions.