



FRONT RUNNER

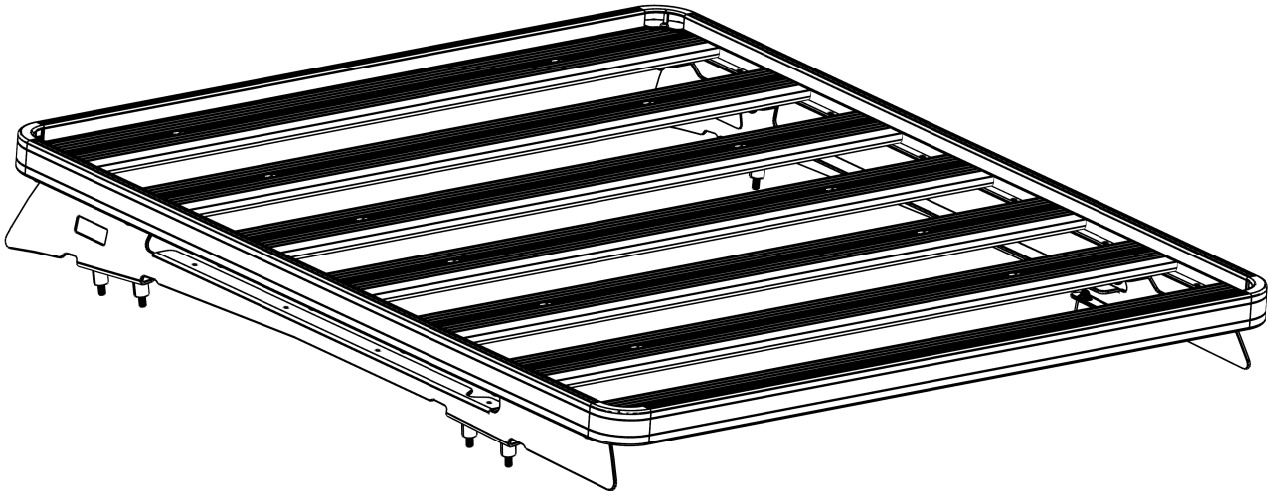
**TOYOTA HILUX
SLIMLINE II RACK
(1165MM X 1358MM)**

ENG

FATH001 / KRTH010T



INSTALL TIME: 60 mins



READ ME FIRST:

Thank you for purchasing a Front Runner Slimline II Rack.

This Roof Rack consists of a kit that contains:

1. A Slimline II Tray
2. A mounting system specific to your vehicle

This particular document will help you fit the Slimline II Tray to your specific vehicle.



IMPORTANT WARNING!

IT IS CRITICAL THAT ALL FRONT RUNNER PRODUCTS BE PROPERLY AND SECURELY ASSEMBLED AND ATTACHED TO YOUR VEHICLE. IMPROPER ATTACHMENT COULD RESULT IN AN AUTOMOBILE ACCIDENT, AND COULD CAUSE SERIOUS BODILY INJURY OR DEATH TO YOU OR TO OTHERS. YOU ARE RESPONSIBLE FOR ASSEMBLING AND SECURING ALL FRONT RUNNER PRODUCTS TO YOUR VEHICLE, CHECKING THE ATTACHMENTS PRIOR TO USE, AND PERIODICALLY INSPECTING THE PRODUCTS FOR ADJUSTMENT, WEAR, AND DAMAGE. THEREFORE, YOU MUST READ AND UNDERSTAND ALL OF THE INSTRUCTIONS AND CAUTIONS SUPPLIED WITH YOUR FRONT RUNNER PRODUCT PRIOR TO INSTALLATION OR USE. IF YOU DO NOT UNDERSTAND ALL OF THE INSTRUCTIONS AND CAUTIONS, OR IF YOU HAVE NO MECHANICAL EXPERIENCE AND ARE NOT THOROUGHLY FAMILIAR WITH THE INSTALLATION PROCEDURES, YOU SHOULD HAVE THE PRODUCT INSTALLED BY A PROFESSIONAL INSTALLER OR OTHER QUALIFIED PERSONNEL.

1

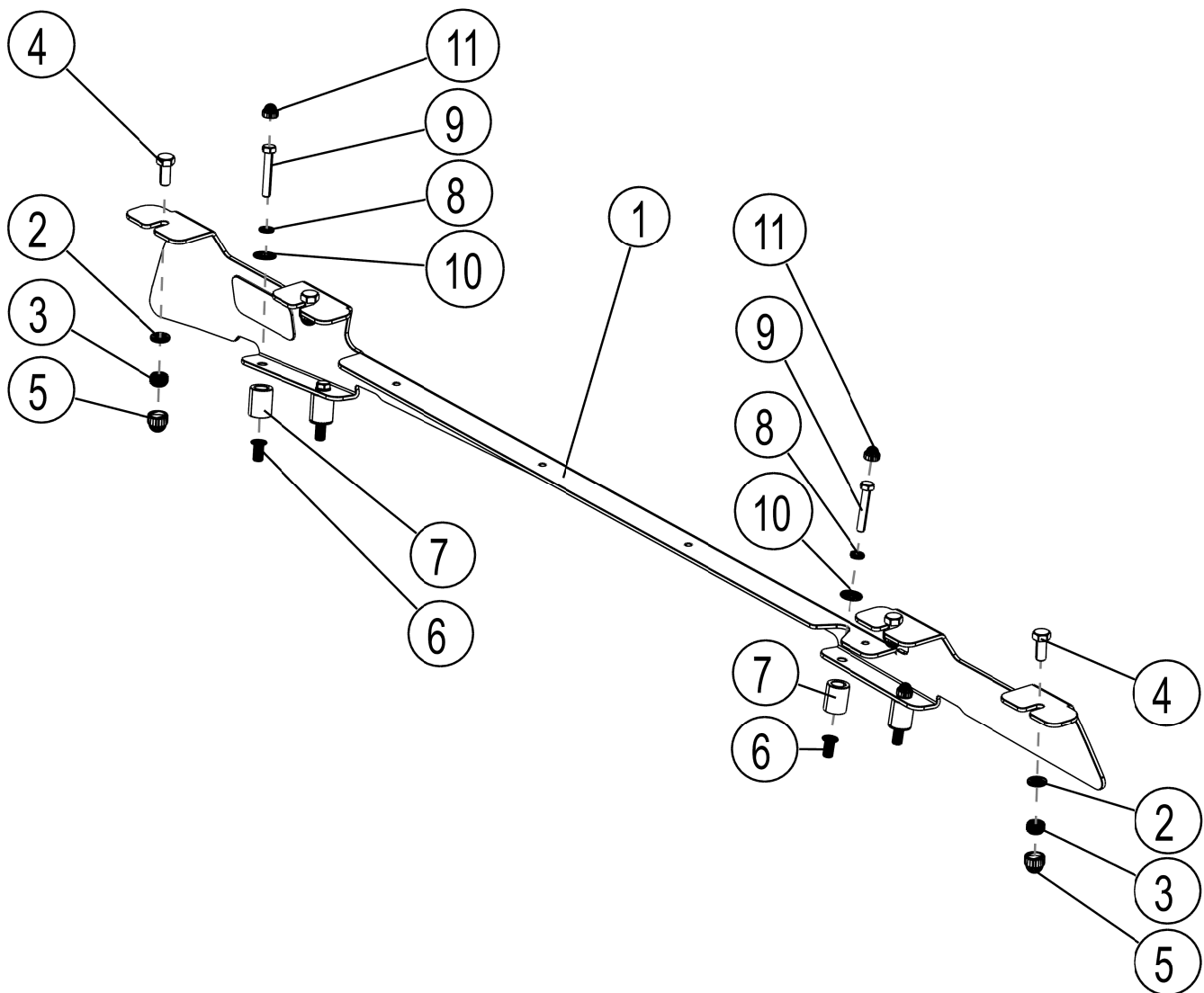
GET ORGANIZED...

Here is what you are looking at for the Foot Rail Assemblies.
Below is an exploded view of the Right Hand Side for reference.

Item #	Quantity	Description
1	2	FOOT RAIL - 1 Left, 1 Right
2	8	M8 FLAT WASHER
3	8	M8 NYLOC NUT
4	8	M8 x 20 HEX BOLT
5	8	M8 NUT CAP
6	8	M6 RIVNUT
7	8	SPACER
8	8	M6 SPRING WASHER
9	8	M6 x 40 HEX BOLT
10	8	M6 x 19 x 1 FLAT WASHER
11	8	M6 NUT CAP

You will need:

- 10 & 13 mm Flat or Socket Wrench
- a Friend
- Measuring Tape
- Drill Machine
- 4 & 9 mm Drill Bit
- 19 mm Hole Saw
- Rivnut Tool
- White Marker
- Silicone

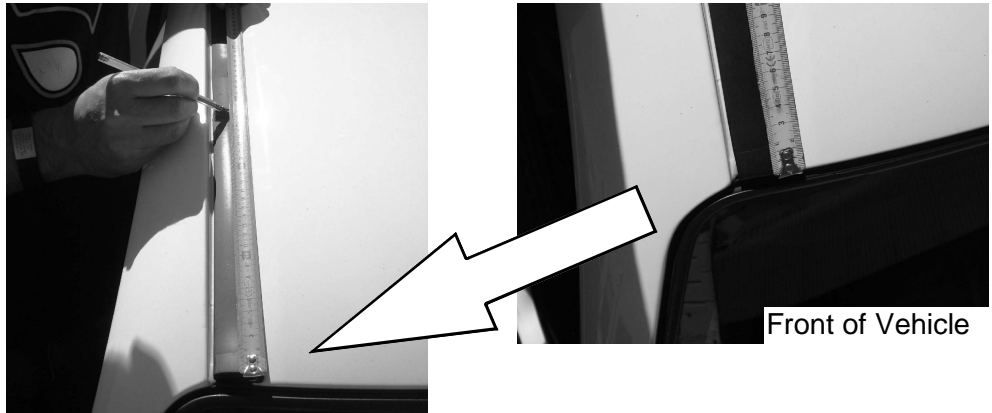


(A) Familiarize yourself with the parts and then step away from the work area and read through these instructions from beginning to end. Take a moment as a little prep now may save you a lot of time later.

2 DRILL AND FIT RIVNUTS

- (A) Starting at the front of the vehicle's windscreen, measure and mark the following distances onto each ditch moulding found on the left and right hand sides of the vehicles roof.

Markings:
1 - 275 mm
2 - 358 mm
3 - 1083 mm
4 - 1167 mm

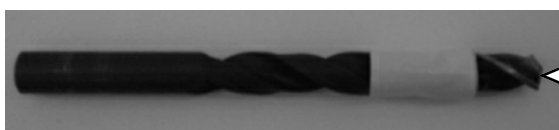


- (B) Find the center of the ditch moulding on each of your markings. Using a 4 mm Drill Bit and Drill Machine, drill a hole through the ditch moulding. Allow the drill to mark the position of the holes onto the roof of the vehicle, but do not drill into/through the roof.

Remove the ditch mouldings.



- (C) Before drilling the holes in the roof, you need to do a bit of prep. Take both the 4 & 9 mm drill bits. Using some insulation tape, wrap a band of tape around the drill bit to act as a stopper to prevent you from drilling too deep as there are airbags located below where you will be drilling.



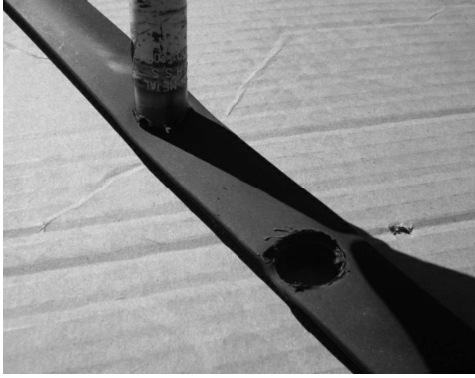
10 mm from tip of drill bit to start of tape.

- (D) Drill the 8 holes you marked earlier, starting with a 4mm pilot hole before going to the larger 9mm hole. There is NO NEED for a lot of downward pressure. Let the drill do the work - your job is to keep the drill steady - you don't want it slipping across your roof and scratching it!

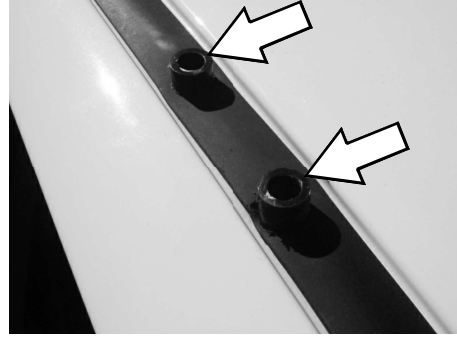
- (E) Using a Rivnut Tool, insert a M6 Rivnut (Item 6) into each of the eight holes 9 mm drilled in Step 2D

3 DRILL DITCH MOULDINGS AND FIT FOOT RAILS

- (A) Using a 19mm Hole Saw and a suitable surface to drill on, open the four holes in each Ditch Moulding (refer to Step 2C) to 19 mm.



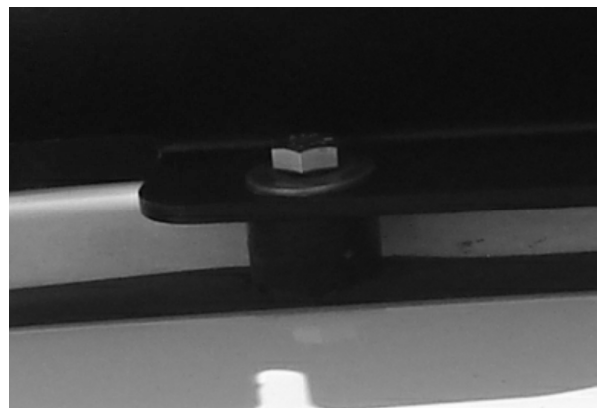
- (B) Place the Ditch Moulding back onto the vehicle, lining up the holes in the moulding with the holes in the vehicle's roof. Insert a Spacer (Item 7) into each of the holes drilled in the Ditch Mouldings.



- (C) Place the Foot Rails onto the Spacers, lining up the holes in the base of the Foot Rails with the center of the Spacers. The Product Sticker goes to the front of the vehicle and must face outwards.



- (D) Secure the Foot Rails to the vehicle using the M6 x 30 Hex Bolts, M6 Spring Washers and M6 x19 x 1 Flat Washers (Items 8, 9, 10). Place some Silicone onto the thread of each Hex Bolt before fastening. Once fastened, place a M6 Nut Cap (Item 11) over the head of each bolt.

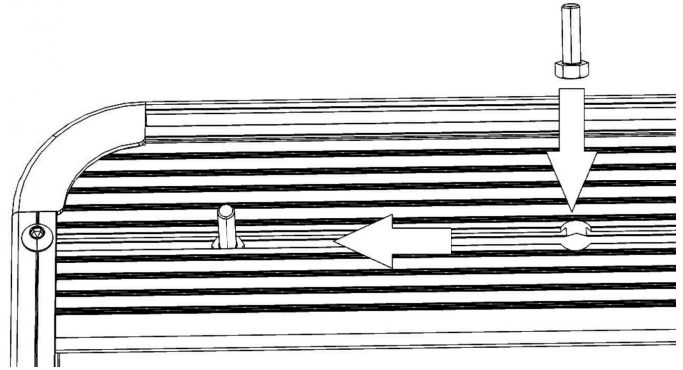


4 FIT THE RACK



Note: If your Slimline II Tray is not already assembled, assemble it as per the Slimline II Tray Universal Assembly Instruction (Document RRSUNI). Read Step 3A before fitting the Wind Deflector

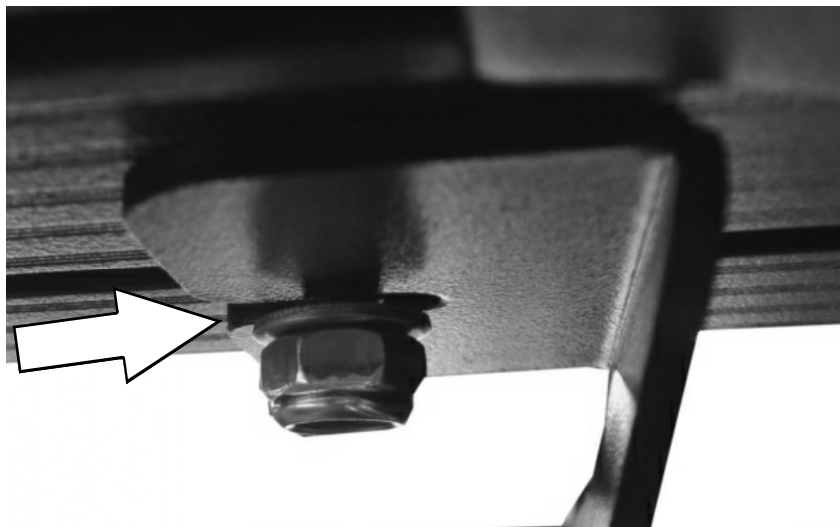
- (A) Before fitting the Wind Deflector, and with the Rack in the upside down position, (Check with product sticker. It should be upside down), slide a M8x20 Hex Bolt (Item 4) into each end of the First Slat using the machined slot as shown.



- (B) With your Rack still upside down from Step 4A, slide a M8 x 20 Hex Bolt (Item 4) into each end of Slats 2, 6 & 7. Place a M8 Flat Washer and M8 Nyloc Nut (Items 2 & 3) onto each bolt. Hand tighten the Nyloc Nuts until they begin to take on the nylon.

Grab your Friend and with one of you on each side of the Rack, flip the Rack end over end so that the M8 x20 Hex Bolts are facing down. Approach the vehicle from the rear, with the Wind Deflector facing forward. Lift the Rack up and over the Roof positioning it above the Foot Rails. Bring the Rack down slowly, lining up the Bolts in the Rack with the slots in the top of the Foot Rails.

Slide the Hex Bolts into the Slots on the Foot Rails, making sure that the Flat Washer and Nyloc Nut sit below the Foot Rail and that the Bolt is all the way in the Slot as shown below and loosely tighten. Ensure that the Rack is still able to move left to right.



4 FIT THE RACK CONT...

- (A) Using a tape measure, center the Rack - left to right. Fasten all the Nyloc Nuts securing the Rack to the Foot Rails. To complete the installation, place the M8 Nut Caps (Item 5) supplied over all the Nyloc Nuts.



5 TAKE A TRIP

- (A) After your first adventure, check that all nuts, bolts, screws and fittings are tight. Re-tighten where needed. You'll find a small amount of settling has happened.

Go on many more adventures, periodically checking all nuts, bolts, screws and fittings.



Front Runner can not recommend a maximum load carrying capacity. Please refer to your vehicle manufacturer's recommendations.

6 INSTALL OTHER VEHICLE AND RACK ACCESSORIES

- (A) Now's the time to visit your favorite Front Runner dealer in person or online.



INSTALL TIME: 5 Mins

1 SEAL YOUR VEHICLE'S ROOF

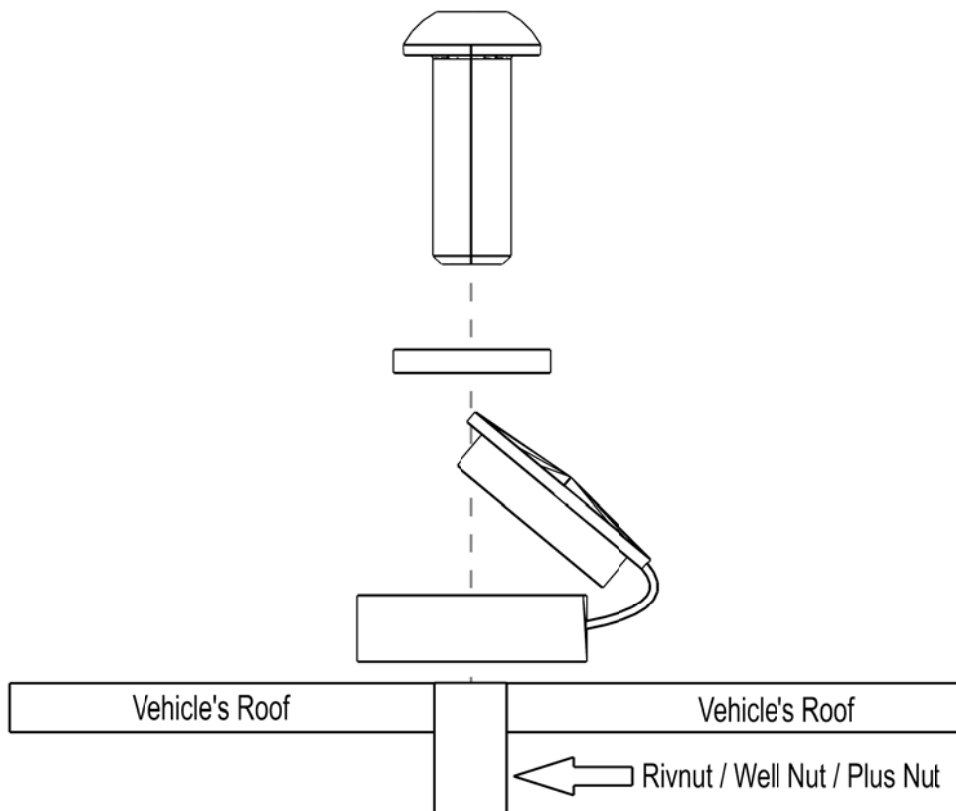
You will need:

- 4 mm Hex Key



If your Rack's Foot Rails have been mounted using a rivnut, well nut or plus nut and you wish to remove the Rack and Foot Rails you will need to seal the mounting holes using the Foot Rail Sealing Kit.

- (A) Remove the Rack and foot Rails from the vehicle, taking care to store all fasteners in a safe place for future use. Clean the area round each of the mounting points ensuring that is if free of any silicone. Place a Cover Cap over each of the mounting points and secure using a M6 Flat Washer and M6 x 16 Button Head Bolt as shown. Close Cap once secured to vehicle.



Congratulations, you have completed your installation. Take a step back and admire your work. Good Job!