



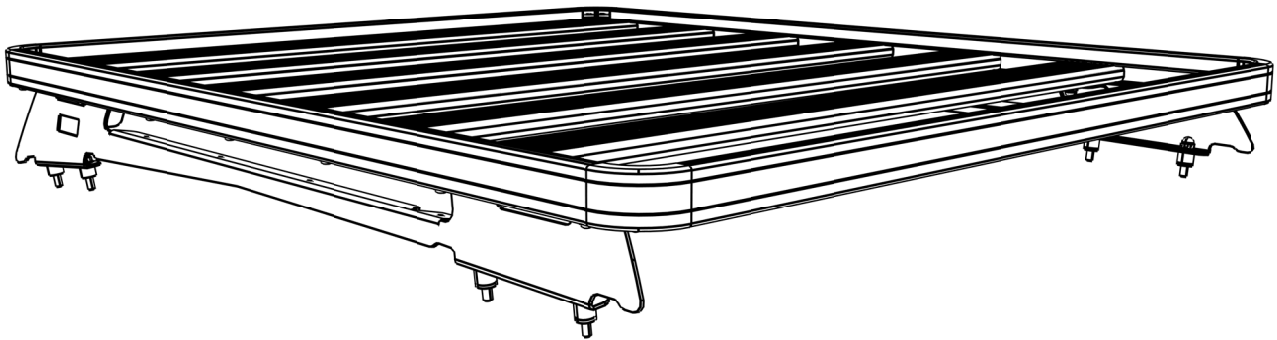
**FRONT RUNNER**

**ISUZU DOUBLE CAB 2013 ONWARDS  
SLIMLINE II RACK  
(1165MM X 1358MM)**

**ENG**

FAIK001

 **INSTALL TIME: 60 mins**



**READ ME FIRST:**

Thank you for purchasing a Front Runner Slimline II Rack.

This Roof Rack consists of a kit that contains:

1. A Slimline II Tray
2. A mounting system specific to your vehicle

This particular document will help you fit the Slimline II Tray to your specific vehicle.



**IMPORTANT WARNING!**

**IT IS CRITICAL THAT ALL FRONT RUNNER PRODUCTS BE PROPERLY AND SECURELY ASSEMBLED AND ATTACHED TO YOUR VEHICLE. IMPROPER ATTACHMENT COULD RESULT IN AN AUTOMOBILE ACCIDENT, AND COULD CAUSE SERIOUS BODILY INJURY OR DEATH TO YOU OR TO OTHERS. YOU ARE RESPONSIBLE FOR ASSEMBLING AND SECURING ALL FRONT RUNNER PRODUCTS TO YOUR VEHICLE, CHECKING THE ATTACHMENTS PRIOR TO USE, AND PERIODICALLY INSPECTING THE PRODUCTS FOR ADJUSTMENT, WEAR, AND DAMAGE. THEREFORE, YOU MUST READ AND UNDERSTAND ALL OF THE INSTRUCTIONS AND CAUTIONS SUPPLIED WITH YOUR FRONT RUNNER PRODUCT PRIOR TO INSTALLATION OR USE. IF YOU DO NOT UNDERSTAND ALL OF THE INSTRUCTIONS AND CAUTIONS, OR IF YOU HAVE NO MECHANICAL EXPERIENCE AND ARE NOT THOROUGHLY FAMILIAR WITH THE INSTALLATION PROCEDURES, YOU SHOULD HAVE THE PRODUCT INSTALLED BY A PROFESSIONAL INSTALLER OR OTHER QUALIFIED PERSONNEL.**

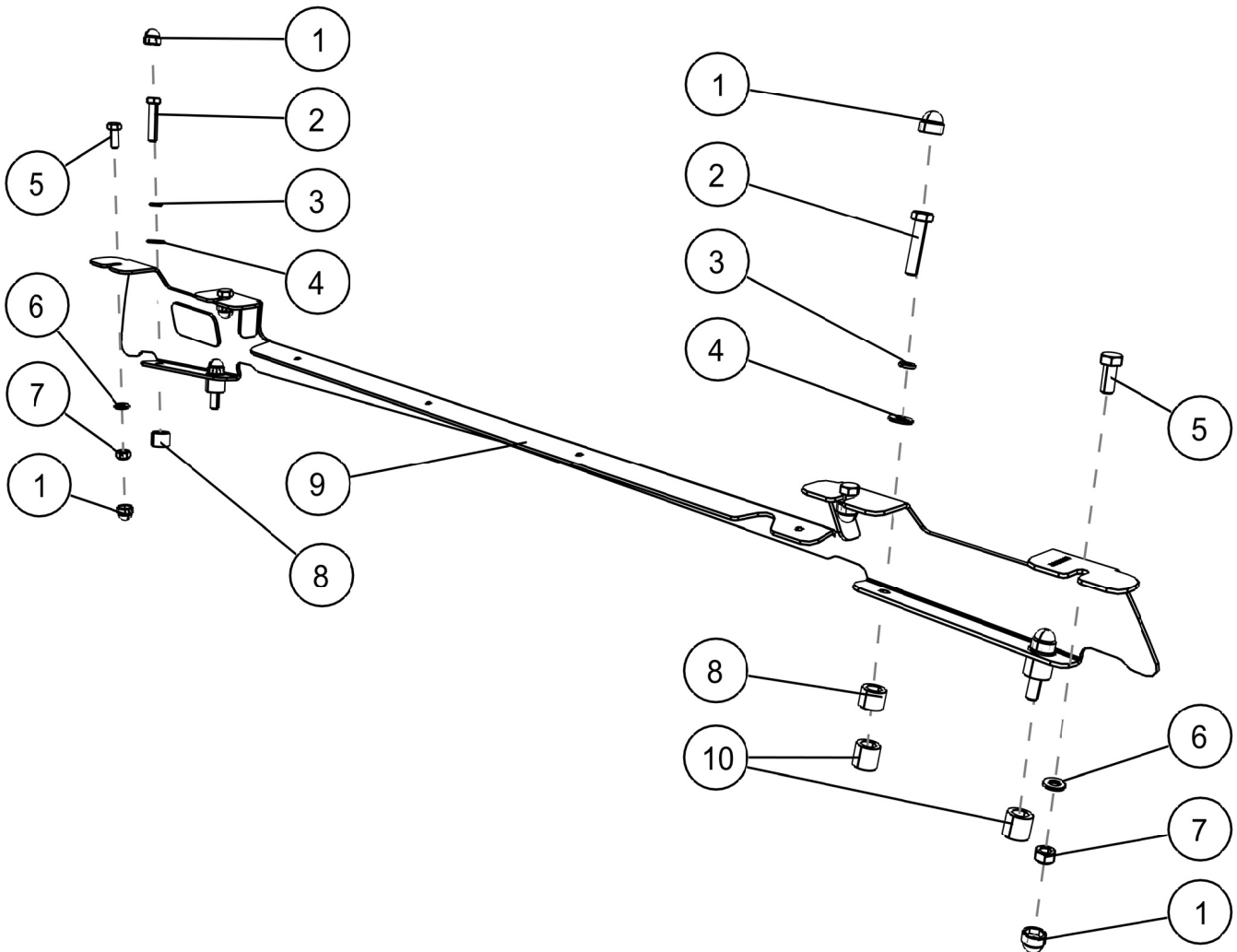
# 1 GET ORGANIZED...

Here is what you are looking at for the Foot Rail Assemblies.  
Below is an exploded view of the Right Hand Side for reference.

Item #	Quantity	Description
1	16	M8 NUT CAP
2	8	M8x40 HEX BOLT
3	8	M8 SPRING WASHER
4	8	M8x19x2 FLAT WASHER
5	8	M8x20 HEX BOLT
6	8	M8x16x1.6 FLAT WASHER
7	8	M8 NYLOC NUT
8	8	SPACER 15mm
9	2	FOOT RAIL - 1 LEFT, 1 RIGHT
10	4	SPACER 20mm

### You will need:

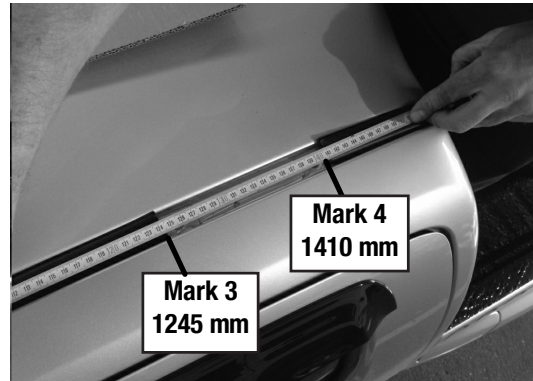
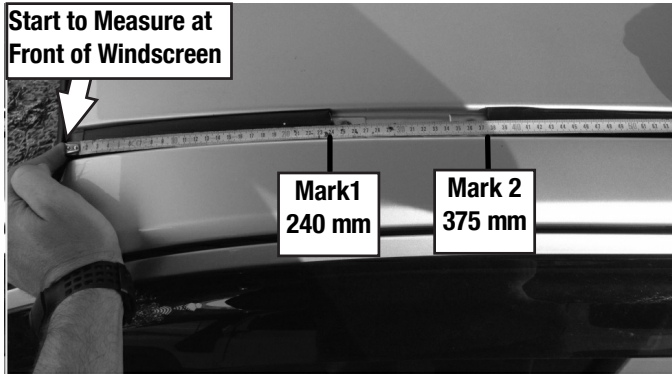
- 13 mm Flat or Socket Wrench
- a Friend
- Measuring Tape
- Marking Pen
- Utility Knife
- Silicone
- Tin Snips



**(A)** Familiarize yourself with the parts and then step away from the work area and read through these instructions from beginning to end. Take a moment as a little prep now may save you a lot of time later.

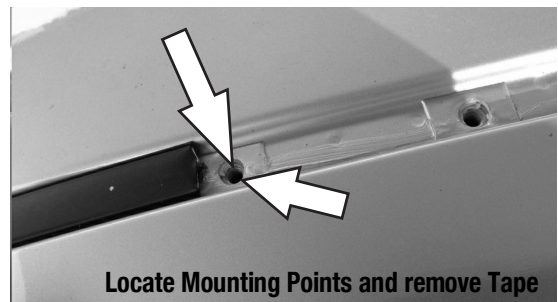
## 2 FIT FOOT RAILS

- ( A ) Starting at the front windscreen as shown, measure along the Ditch Moulding towards the rear of the vehicle. Mark the Ditch Moulding at the following distances 240 mm, 375 mm, 1245 mm and 1410 mm.



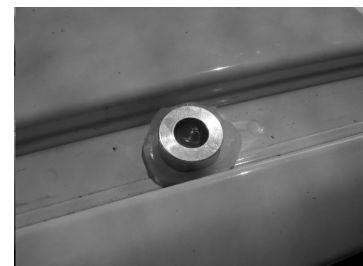
- ( B ) Using a pair of tin snips, cut the Ditch Moulding on each of your marks and remove the small strips of Ditch Moulding between markings 1-2 and 3-4.

Looking at the ditch, where you have just removed the Ditch Moulding, locate the two Threaded Mounting Points in the vehicle's roof and remove the Protective Tape covering them.



- ( C ) Put a small amount of silicone over each Mounting Point and place a Spacer (Item 8) on top of the Silicone, lining up the hole in the Spacer with the Mounting Point.

Note: For the 2015 to Current vehicle models, the 20mm Spacers (Item 10) must be used at the rear mounting points.



- ( D ) Place the Foot Rails (Item 9) onto the Spacers, lining up the holes in the base of the Foot Rails with the center of the Spacers. The Product Sticker goes to the front of the vehicle and must face outwards.

Secure the Foot Rails to the vehicle using the M8 x 40 Hex Bolts, M8 Spring Washers and M8 x 19 Flat Washers (Items 2, 3, 4). Once fastened, place a M8 Nut Cap (Item 1) over the head of each bolt.

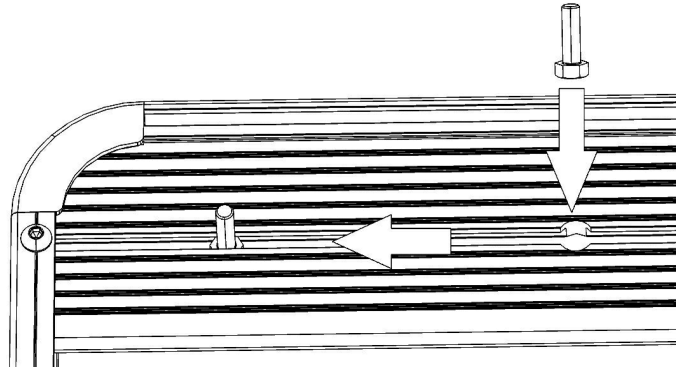


### 3 FIT THE RACK



**Note:** If your Slimline II Tray is not already assembled, assemble it as per the Slimline II Tray Universal Assembly Instruction (Document RRSUNI). Read Step 3A before fitting the Wind Deflector

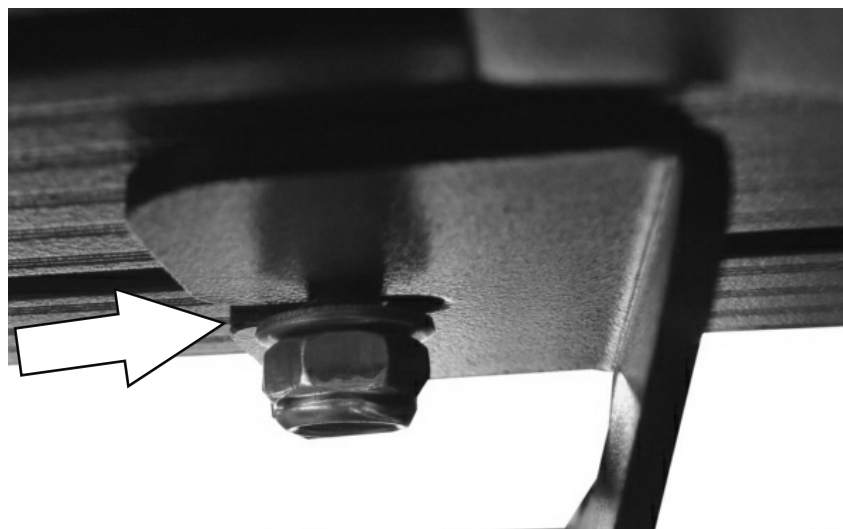
- ( A ) Before fitting the Wind Deflector, and with the Rack in the upside down position, (Check with product sticker. It should be upside down), slide a M8 x 20 Hex Bolt (Item 5) into each end of the First Slat using the machined slot as shown.



- ( B ) With your Rack still upside down from Step 4A, slide a M8 x 20 Hex Bolt (Item 5) into each end of Slats 2, 6 & 7. Place a M8 Flat Washer and M8 Nyloc Nut (Items 6 & 7) onto each bolt. Hand tighten the Nyloc Nuts until they begin to take on the nylon.

Grab your Friend and with one of you on each side of the Rack, flip the Rack end over end so that the M8 x20 Hex Bolts are facing down. Approach the vehicle from the rear, with the Wind Deflector facing forward. Lift the Rack up and over the Roof positioning it above the Foot Rails. Bring the Rack down slowly, lining up the Bolts in the Rack with the slots in the top of the Foot Rails.

Slide the Hex Bolts into the Slots on the Foot Rails, making sure that the Flat Washer and Nyloc Nut sit below the Foot Rail and that the Bolt is all the way in the Slot as shown below and loosely tighten. Ensure that the Rack is still able to move left to right.



### 3 FIT THE RACK CONT...

- ( A ) Using a tape measure, center the Rack - left to right. Fasten all the Nyloc Nuts securing the Rack to the Foot Rails. To complete the installation, place the M8 Nut Caps (Item 1) supplied over all the Nyloc Nuts.



### 4 TAKE A TRIP

- ( A ) After your first adventure, check that all nuts, bolts, screws and fittings are tight. Re-tighten where needed. You'll find a small amount of settling has happened.

Go on many more adventures, periodically checking all nuts, bolts, screws and fittings.



Front Runner can not recommend a maximum load carrying capacity. Please refer to your vehicle manufacturer's recommendations.

### 5 INSTALL OTHER VEHICLE AND RACK ACCESSORIES

- ( A ) Now's the time to visit your favorite Front Runner dealer in person or online.