



FRONT RUNNER

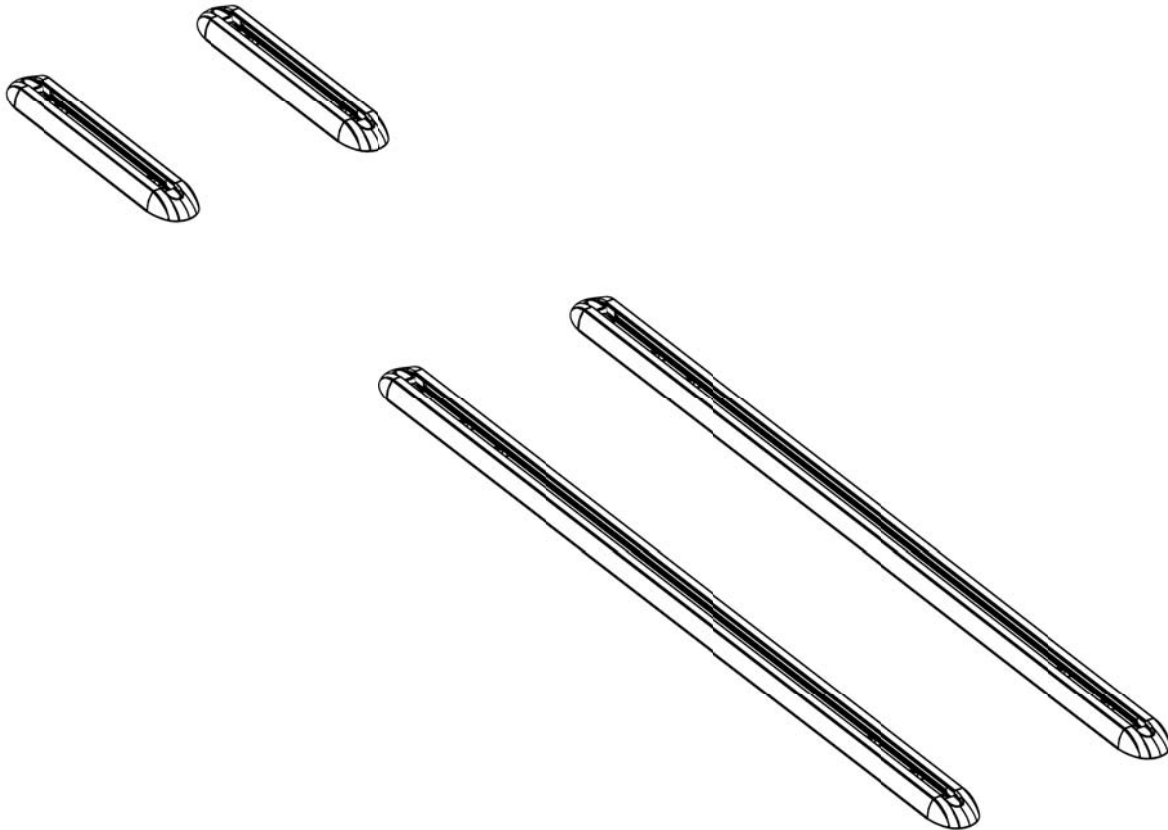
**TOYOTA FORTUNER
TRACKS**

ENG

TRTF002



INSTALL TIME: 60 mins



IMPORTANT WARNING!

IT IS CRITICAL THAT ALL FRONT RUNNER PRODUCTS BE PROPERLY AND SECURELY ASSEMBLED AND ATTACHED TO YOUR VEHICLE. IMPROPER ATTACHMENT COULD RESULT IN AN AUTOMOBILE ACCIDENT, AND COULD CAUSE SERIOUS BODILY INJURY OR DEATH TO YOU OR TO OTHERS. YOU ARE RESPONSIBLE FOR ASSEMBLING AND SECURING ALL FRONT RUNNER PRODUCTS TO YOUR VEHICLE, CHECKING THE ATTACHMENTS PRIOR TO USE, AND PERIODICALLY INSPECTING THE PRODUCTS FOR ADJUSTMENT, WEAR, AND DAMAGE. THEREFORE, YOU MUST READ AND UNDERSTAND ALL OF THE INSTRUCTIONS AND CAUTIONS SUPPLIED WITH YOUR FRONT RUNNER PRODUCT PRIOR TO INSTALLATION OR USE. IF YOU DO NOT UNDERSTAND ALL OF THE INSTRUCTIONS AND CAUTIONS, OR IF YOU HAVE NO MECHANICAL EXPERIENCE AND ARE NOT THOROUGHLY FAMILIAR WITH THE INSTALLATION PROCEDURES, YOU SHOULD HAVE THE PRODUCT INSTALLED BY A PROFESSIONAL INSTALLER OR OTHER QUALIFIED PERSONNEL.

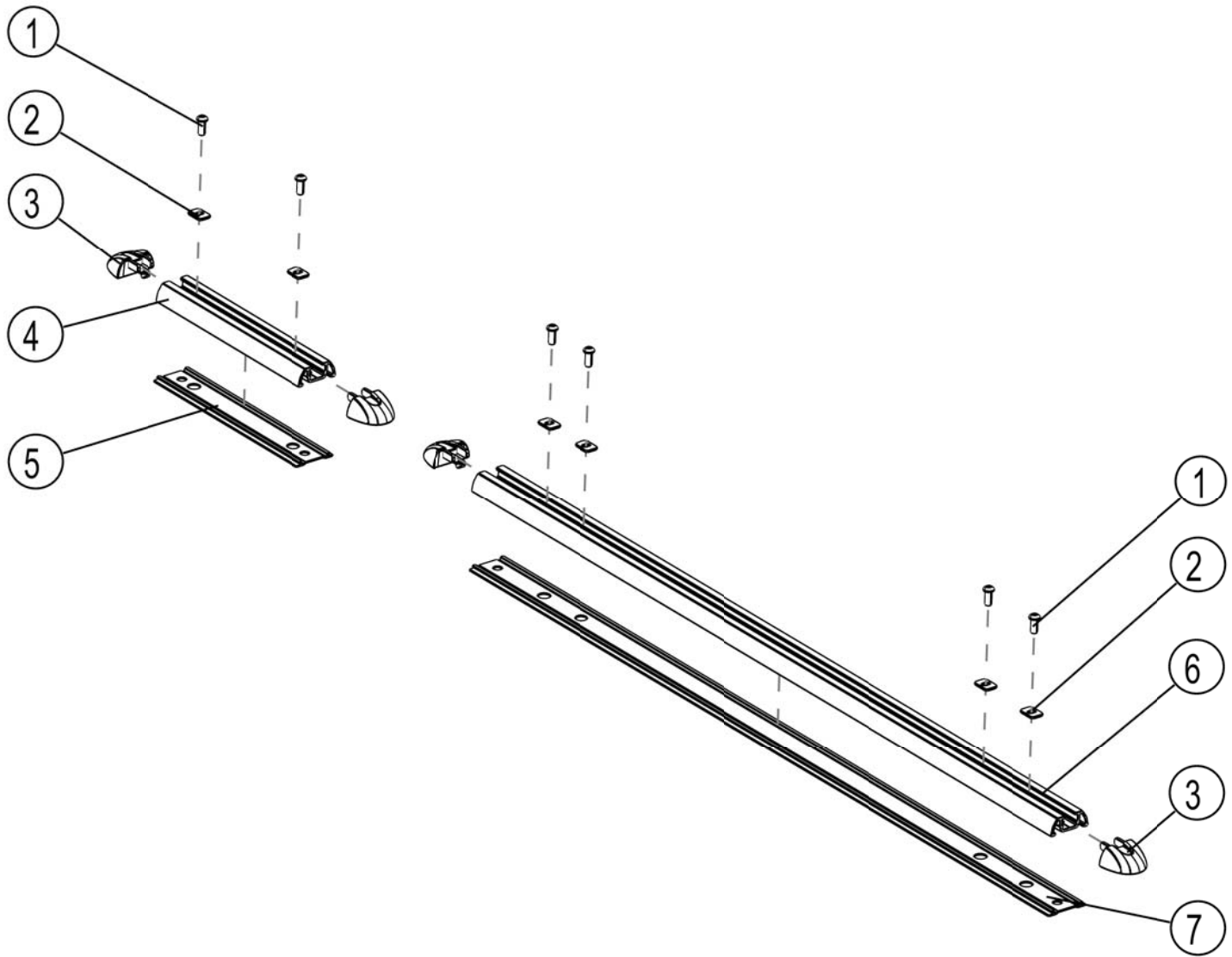
1

GET ORGANIZED...

Here is what you are looking at: Please note that only the right hand side has been shown.

Item #	Quantity	Description
1	12	M6 x 20 BUTTON HEAD BOLT
2	12	TRACK WASHER
3	8	END CAP
4	2	FRONT TRACK
5	2	FRONT PROTECTIVE STRIP
6	2	REAR TRACK
7	2	REAR PROTECTIVE STRIP
8	4	RUBBER PLUG (Not Pictured)

- You will need:**
- 10 mm Flat and Socket Wrench
 - 4 mm Hex Key
 - Rag and some Methylated Spirits/Denatured Alcohol
 - Tube of Clear Silicone
 - Drill Machine
 - 13 mm Drill Bit
 - Medium Flat Screw Driver
 - White Marking Pen

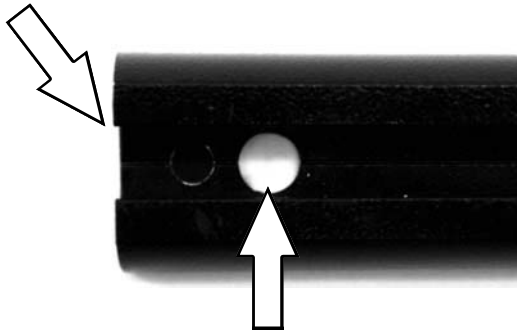


(A) Familiarize yourself with the parts and then step away from the work area and read through these instructions from beginning to end. Take a moment as a little prep now may save you a lot of time later.

2 INSTALL THE TRACKS

- (A) Ensure that the Protective Strip (Items 5 & 7) is lined up with the edge of the Track (Items 2 & 6). Using a white marking pen, mark the position of all the 12 mm holes in the Track (Two holes per Front Track and four holes per Rear Track) onto the Protective Strip. Starting at one end, slide the Protective Strip out from under the Track (as shown) to expose your markings. Using a drill machine, 13 mm drill bit and a suitable surface to drill on, carefully drill a 13 mm hole in the Protective Strip on each of your markings. Once complete, slide the Protective Strip back and across to expose your markings on the other side of the Track and drill the remaining 13 mm holes. Slide the Protective Strip back into position, lining up the holes in the Track up with the holes in the Protective Strip.

Ensure Protective Strip is lined up with Track



Mark all 12 mm Hole positions onto Protective Strip.

Slide Protective Strip out to expose markings



Drill a 13 mm Hole on each marking.

- (B) Using a flat screwdriver remove the front, middle and rear covers from both roof rails.



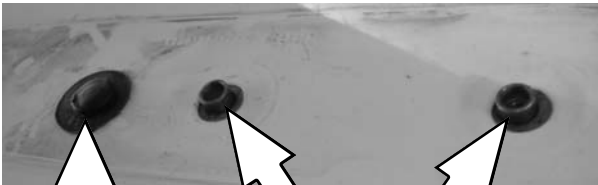
- (C) Using a 10 mm wrench, loosen the six bolts each side securing the rails to the vehicle.



2 INSTALL THE TRACKS

- (E) Remove the Roof Rails from the vehicle. Looking at the front and rear mounting points on the vehicles roof, you will note that there is an open hole in the vehicle's roof. Insert a Rubber Plug (Item 8) supplied into each of the holes. Clean the area around each of the threaded mounting points using a rag and methylated spirits/ denatured alcohol. Silicone the area around each of the mounting points.

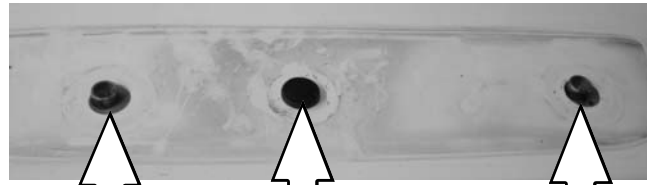
REAR MOUNTING POINTS



Insert Plug

Silicone

FRONT MOUNTING POINTS



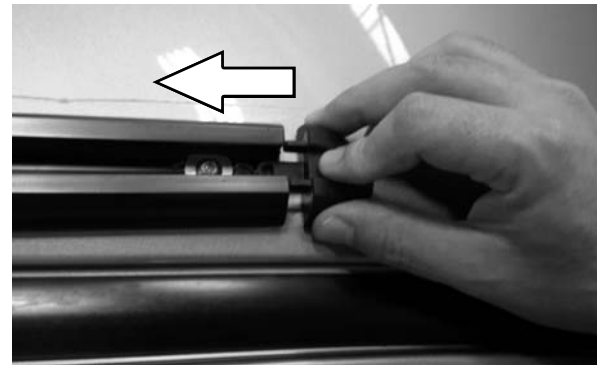
Silicone

Insert Plug

Silicone

- (E) Place the Tracks onto the vehicle, lining up the holes in the Track with the mounting points in the vehicle's roof. Secure the Tracks to the vehicle using the M6 x 16 Button Head Bolts and Track Washers (Items 1 & 2) supplied.

Once you have inserted all the required components for the accessories to be mounted to the Track, slide and clip an End Cap on to end of each Track as shown.



- (F) Congratulations, you have completed your installation. Take a step back and admire your work. Good Job!

