



FRONT RUNNER

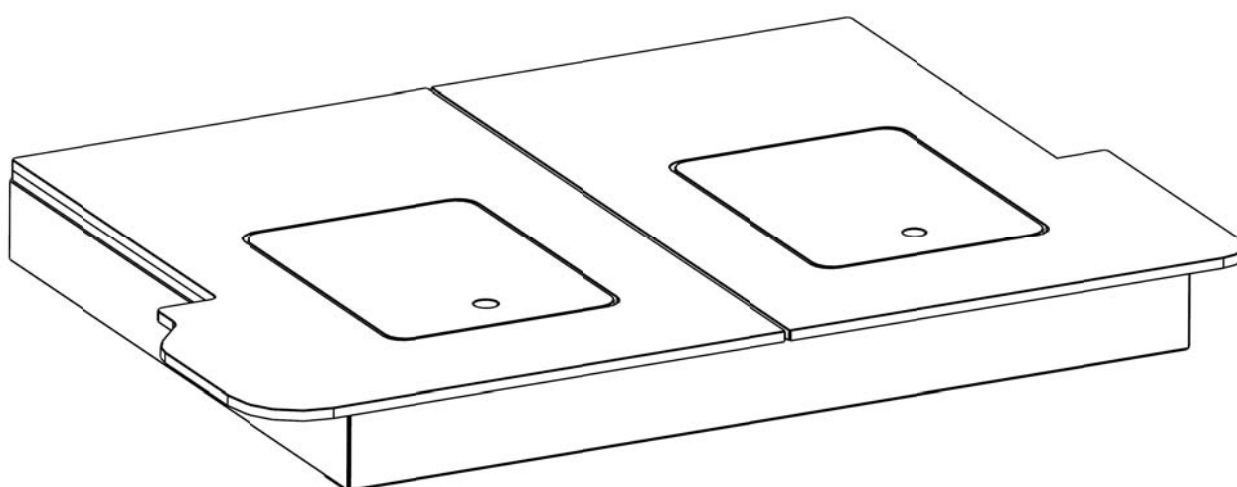
**TOYOTA PRADO 150
TRUNK BASE BOX & DECK**

ENG

SSTP001



INSTALL TIME: 45 mins



IMPORTANT WARNING!

IT IS CRITICAL THAT ALL FRONT RUNNER PRODUCTS BE PROPERLY AND SECURELY ASSEMBLED AND ATTACHED TO YOUR VEHICLE. IMPROPER ATTACHMENT COULD RESULT IN AN AUTOMOBILE ACCIDENT, AND COULD CAUSE SERIOUS BODILY INJURY OR DEATH TO YOU OR TO OTHERS. YOU ARE RESPONSIBLE FOR ASSEMBLING AND SECURING ALL FRONT RUNNER PRODUCTS TO YOUR VEHICLE, CHECKING THE ATTACHMENTS PRIOR TO USE, AND PERIODICALLY INSPECTING THE PRODUCTS FOR ADJUSTMENT, WEAR, AND DAMAGE. THEREFORE, YOU MUST READ AND UNDERSTAND ALL OF THE INSTRUCTIONS AND CAUTIONS SUPPLIED WITH YOUR FRONT RUNNER PRODUCT PRIOR TO INSTALLATION OR USE. IF YOU DO NOT UNDERSTAND ALL OF THE INSTRUCTIONS AND CAUTIONS, OR IF YOU HAVE NO MECHANICAL EXPERIENCE AND ARE NOT THOROUGHLY FAMILIAR WITH THE INSTALLATION PROCEDURES, YOU SHOULD HAVE THE PRODUCT INSTALLED BY A PROFESSIONAL INSTALLER OR OTHER QUALIFIED PERSONNEL.

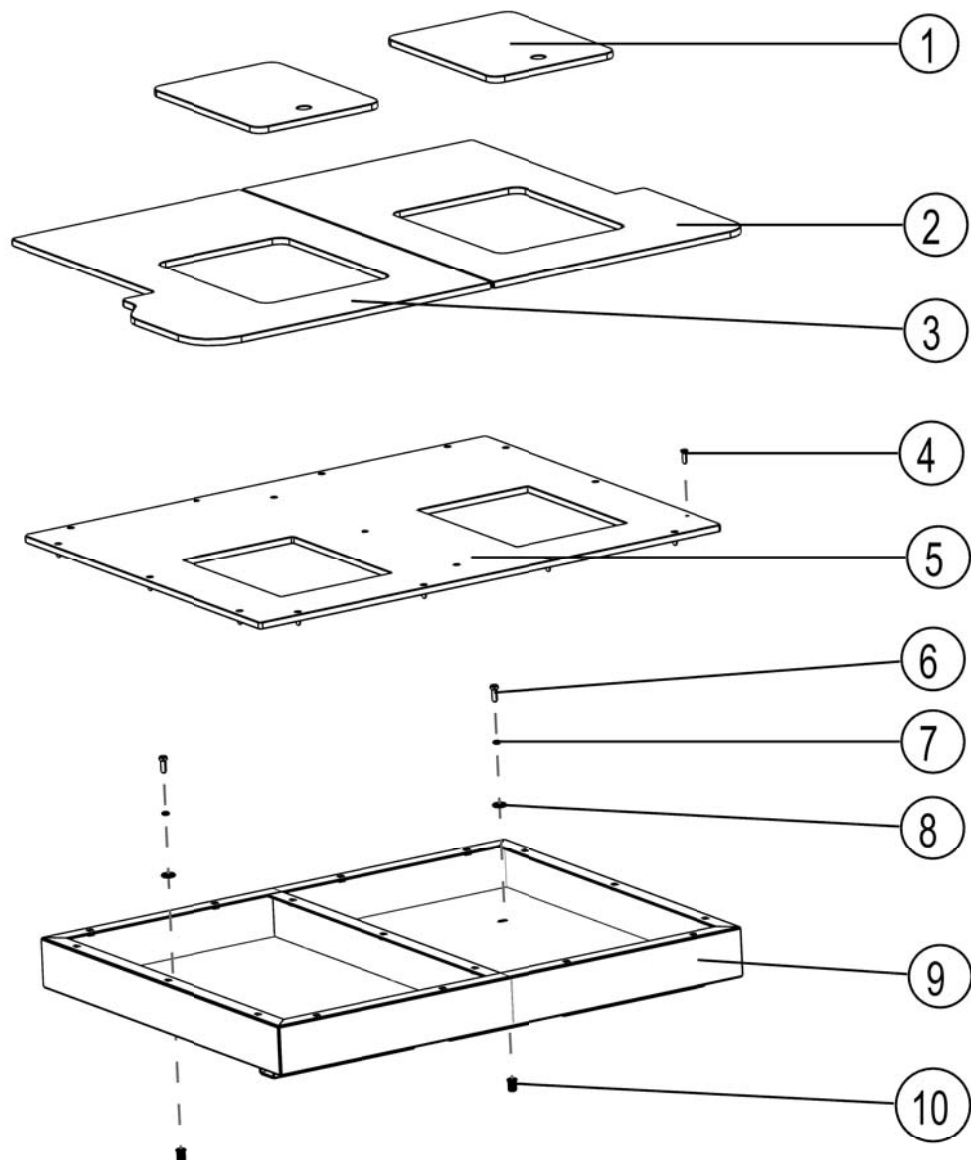
1 GET ORGANIZED

Here is what you are looking at:

Item #	Quantity	Description
1	2	HATCH LID
2	1	RIGHT TOP DECK
3	1	LEFT TOP DECK
4	17	M6 x 25 COUNTERSUNK SCREW
5	1	BOTTOM DECK
6	2	M8 x 25 HEX BOLT
7	2	M8 SPRING WASHER
8	2	M8 x 25 FLAT WASHER
9	1	BASE BOX
10	2	M8 RIVNUT
11	26	M5 x 25 WOOD SCREW (Not Shown)

You will need:

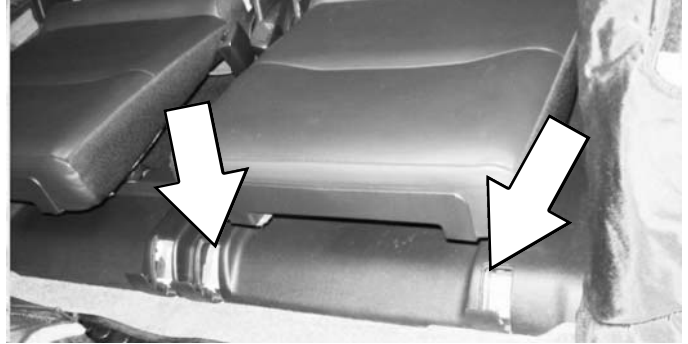
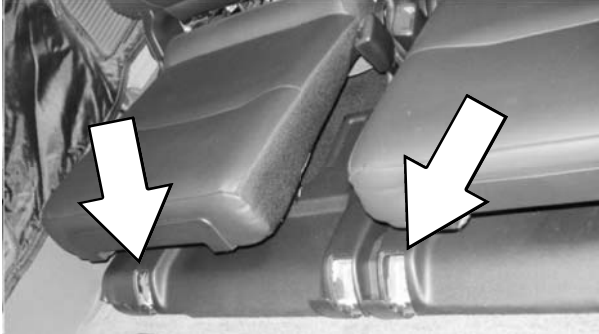
- ☐ 10 mm & 14 mm Socket Wrench
- ☐ Drill Machine
- ☐ 5 mm & 11 mm Drill Bit
- ☐ M8 Rivnut Tool
- ☐ Panel Tool
- ☐ Marker Pen
- ☐ Star Point / Phillips Screwdriver or Pozi Drive



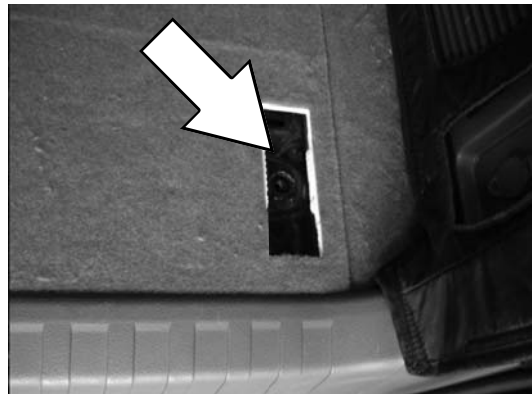
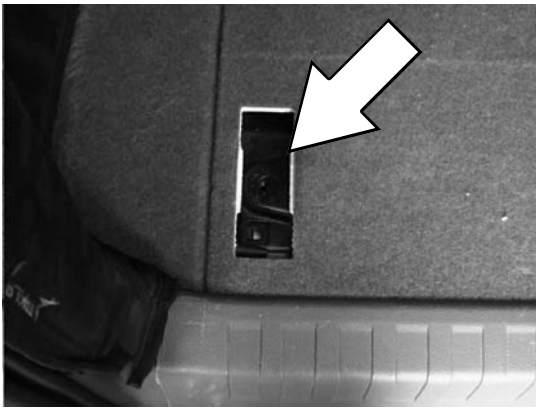
(A) Familiarize yourself with the parts and then step away from the work area and read through these instructions from beginning to end. Take a moment as a little prep now may save you a lot of time later.

2 PREPARE FOR FITMENT

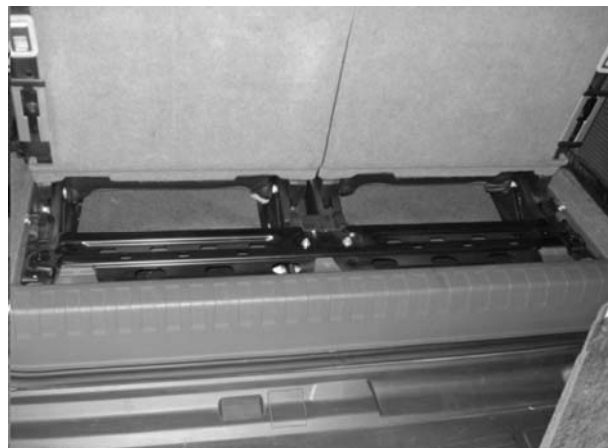
- (A) Working through the rear passenger doors. Move the first row of passenger seats forward creating space for you to work. Ensure that the second row of passenger seats are in the upright position and loosen the two bolts per seat as indicated by the arrows.



- (B) Working through the rear door of the vehicle, remove the two covers as shown.

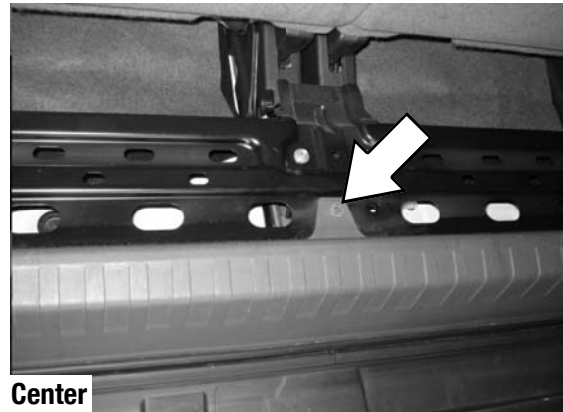
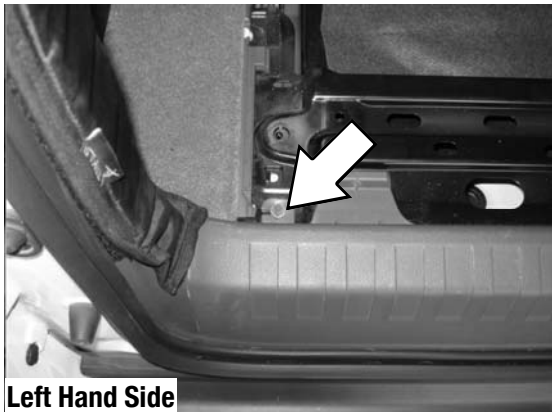


- (C) Remove the rear floor panel as shown. Take care not to break the panel clips while pulling the panel free.



2 PREPARE FOR FITMENT CONT...

- (D) Loosen and remove the three bolts (1 left, 1 Center, 1 Right) securing the plastic trim to the vehicle.



- (E) Using a panel tool, remove the two side panels as shown.

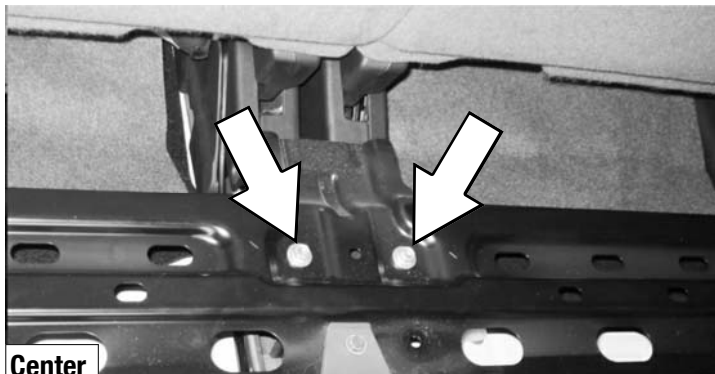
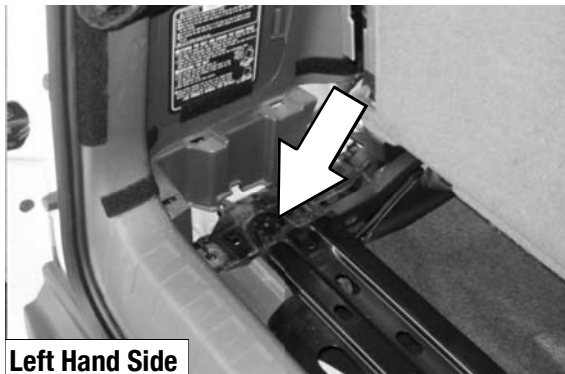


- (F) Using a panel tool, remove the rear plastic trim as shown.

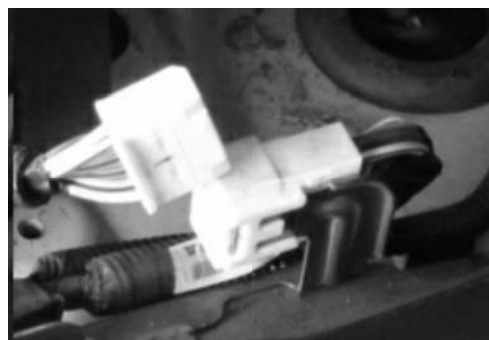
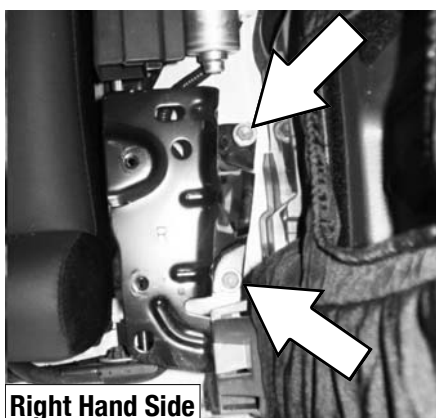


2 PREPARE FOR FITMENT CONT...

- (G) Move the second row of rear seats into the down position. Loosen and remove the black steel section that runs behind the second row of passenger seats by loosening the four securing bolts, one on either end and two in the middle (as indicated by the arrows).



- (H) Remove the steel cover either side of the seats by loosening the two bolts as indicated by the arrows. Disconnect the electrical connection as shown

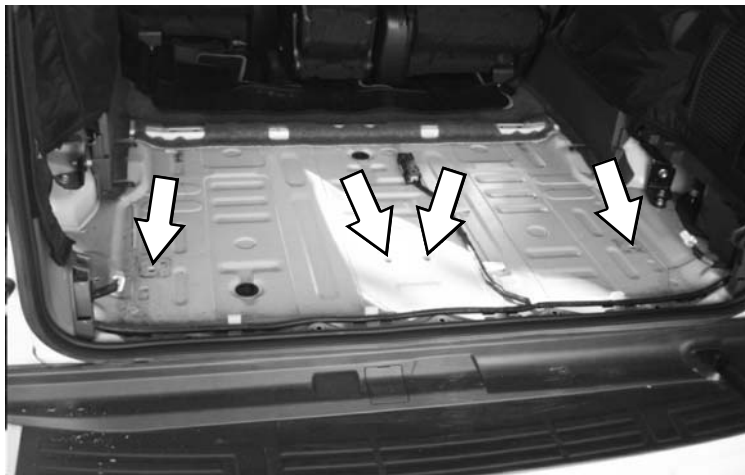
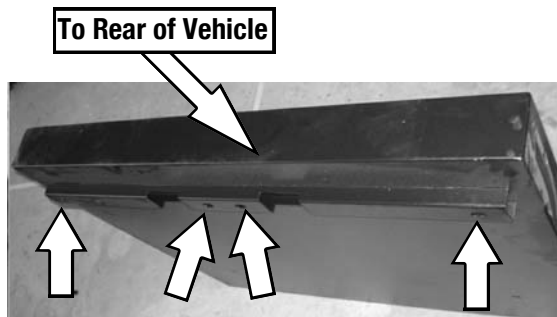


- (I) Loosen the four bolts (1 Left, 2 Center, 1 Right) and remove the second row of rear seats from the vehicle.



3 INSTALL BASE BOX AND DECKS

- (A) Place the Base Box (Item 9) into the vehicle. The end of the Base Box with the square foot must face to the rear of the vehicle. Line the four holes in the rear of the Base Box up with the four mounting points from step 21 as indicated by the arrows. Take care not to damage the electrical cable and sensor.



- (B) Looking at the floor of the Base Box from inside the passenger doors, you will notice that the mounting slot on the right hand side of the vehicle lines up with one of the holes in the vehicle's body. This hole needs to be drilled to 11 mm.

Mark the position of the left hand side mounting slot onto the vehicle's body. Move the Base Box out of the way and drill a 5 mm pilot hole into the floor of your vehicle in the center of your marking.

Change to a 11 mm drill bit and open both the 5 mm pilot hole on the left hand side of the vehicle and the hole on the right hand side of the vehicle (mentioned above) to 11 mm. Insert a M8 Rivnut (Item 10) into each of the holes.



3 INSTALL BASE BOX AND DECKS CONT...

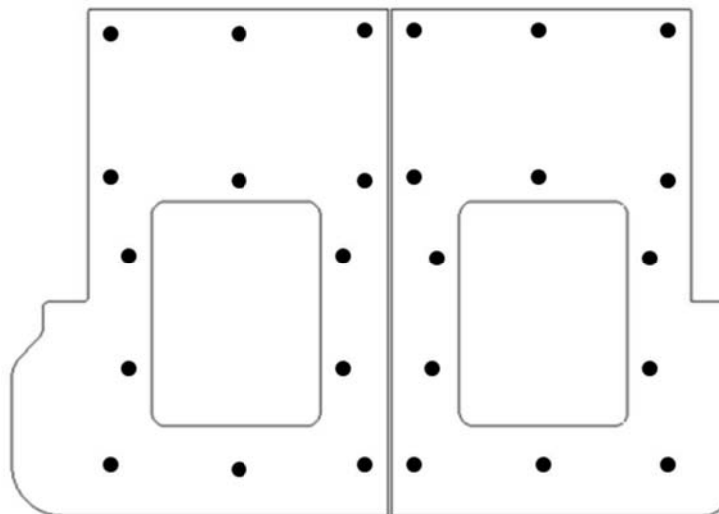
- (C) Place the Bottom Box back into position, lining up the holes in the Base Box with the holes in the vehicle. Secure the front of the Bottom Box to the vehicle using the two M8 x 25 Hex Bolts, M8 x 30 Flat Washers and M8 Spring Washers (Items 6, 7, 8) supplied and use the four original bolts from Step 2I to secure the rear.

- (D) Secure the Bottom Deck (Item 4) to the Base Box using the M6 x 25 Countersunk Bolts (Item 6) supplied. The cut-outs in the Bottom Deck are towards the rear of the vehicle.

Refit the plastic panel removed in Step 2F.



- (E) Place the Left and Right Top Decks (Items 2 & 3) onto the Bottom Deck, lining up the front edges (Passenger seats side) of the Top Decks with the front edge (Passenger seats side) of the Bottom Deck. Once happy with the positioning of the Top Decks, secure the Top Decks to the Bottom Deck using the Wood Screws (Item 11) supplied. Below is the suggested pattern to follow when securing the decks.



3 INSTALL BASE BOX AND DECKS CONT...

- (**F**) Place the Hatch Lid's (Item 1) into position.



- (**G**) Congratulations, you have completed your installation. Take a step back and admire your work. Good Job!

4 INSTALL OTHER VEHICLE AND RACK ACCESSORIES

- (**A**) Now's the time to visit your favorite Front Runner dealer in person or online.