



GMC® 1500 GRILLE

2011-2013 GMC® 1500

**GMC® 1500 GRILLE
INSTALLATION INSTRUCTIONS
(I) 20" RDS-SERIES™**



KIT INCLUDES

- | | |
|---|-------------------------|
| (1) Rigid Grille #40589 | (11) 5/16 SS Nyloc Nuts |
| (1) 20" RDS-Series | (11) 5/16 SS Washers |
| (11) 5/16 x 5/8 Long SS Button Head Screw | (2) GMC Grille Bracket |

IMPORTANT

Thank you for purchasing Rigid Industries' products for your GMC® 1500. Installation is fairly simple with the right tools and good mechanical abilities. If you are not confident in your mechanical skills, please seek the help of a professional to perform the installation. Please read through all of these instructions and tips before proceeding with the installation. **It is strongly recommended that this product be installed by a professional.**

Installation of this product requires cutting of your factory installed grille. Your factory grille will be unusable after it has been cut. This product has more surface area than your factory grille. It may reduce airflow into your vehicle. Reduction in airflow can potentially lead to overheating issues. This product has been pre-bent to fit the contour of your vehicle grille shell. However, it may have partially flattened during shipping. It may be necessary for you to re-shape in order to get a good fit.

Always disconnect any power sources connected to your vehicle before servicing fuses or electrical systems.

STEP 1

Remove and save (8) press-in buttons from radiator valance and remove radiator valance. See Figure 1.

Figure 1:



STEP 2

Remove and save (4) 10mm screws. See Figure 2.

Figure 2:



STEP 3

Pinch (6) clips to loosen the grille. Pinch (6) tabs on bumper to release the grille. See Figure 3.

Figure 3:



Figure 3.1:



Figure 3.2:



STEP 4

Cut out OEM grille around inside edges. See Figure 4.

Figure 4:



Figure 4.1:



STEP 5

Lay Rigid Industries grille onto grille shell and mark (9) holes at tabs to be drilled with a 23/64" drill bit. See Figure 5.

Figure 5:



STEP 6

Remove grille and drill (9) holes. See Figure 6.

Figure 6:



STEP 7

Place grille back onto shell. Install (9) 5/16 x 5/8 Long SS Button Head Screws, (9) 5/16 SS Nyloc Nuts, and (9) 5/16 SS Washers. See Figure 7.

Figure 7: (only 2 installed screws shown)

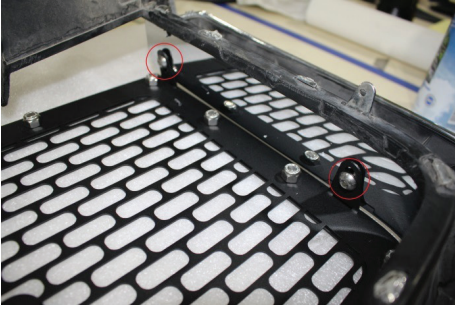


Figure 7.1:



STEP 8

Install 20" RDS-Series using hardware provided with the light. See Figure 8.

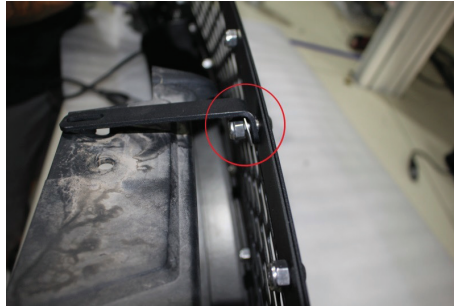
Figure 8:



STEP 9

Install (2) GMC Grille Brackets, (2) 5/16 x 5/8 Long SS Button Head Screw, (2) 5/16 SS Nyloc Nuts, and (2) 5/16 SS Washers on Rigid grille. (2 vacant holes on grille will now be populated with these brackets) See Figure 9.

Figure 9:



STEP 10

Place grille into vehicle and install (4) 10mm screws saved in Step 2. See Figure 10.

Figure 10:



STEP 11

Re-install radiator valance with (8) press in buttons saved from Step 1. See Figure 11.

Wire your lights according to the instructions included with the light. Take care to avoid any heat sources and sharp or abrasive surfaces.

Figure 11:



Your installation is now complete.

Welcome to the Rigid Nation!



WARRANTY INFORMATION

Rigid Industries warrants that this product will be free from defects in material and workmanship. If you believe your Rigid Industries product is defective, it must be returned to Rigid Industries for inspection by our warranty claims department. If, after inspection, Rigid Industries verifies that the defect was not caused by negligence, abuse, unauthorized repair or disassembly, Rigid Industries will determine whether the product will be repaired or replaced in accordance with Rigid Industries Limited Lifetime Warranty*.

Warranty Periods:

- All LED Lights – Limited Lifetime
- Flashlights – 1 year
- Accessories and Mounts – 2 years
- Batteries – 90 days

Warranty Coverage:

To begin your warranty claim, you must have a Return Merchandise Authorization (RMA) number. To get your RMA number, please contact our warranty department by phone at 480-655-0100 ext. 1008, or by filling out the Return Merchandise Authorization Form on our website.

All of the following will immediately void all warranties:

- Customer negligence – The customer has modified the light and/or is not using it for the recommend application.
- Customer abuse – Damage to the light beyond normal wear and tear.
- Repair work done by unauthorized personnel without Rigid Industries' approval.
- If the light has been opened or any screws have been removed.

All warranties are non-transferable. Warranty terms and policies are subject to change without notice.

*For all information regarding the Rigid Industries' Limited Lifetime Warranty please call 855-760-5337 ext. 1008, email warranty@RigidIndustries.com, or visit our warranty page online at rigidindustries.com/about/warranty.

Follow us on facebook at
[Facebook.com/RigidIndustries](https://www.facebook.com/RigidIndustries)

779 N Colorado St, Gilbert, AZ 85233 • 855-760-5337 ext 1008 • www.rigidindustries.com

PKG-IS-123 REV1

RDS-Series, Rigid Industries and Rigid are registered and common law marks owned by JST Performance, Inc. d/b/a Rigid Industries.